



July 19, 2010

Dear Presbytery Executive or Stated Clerk:

We are pleased to provide this Ten-Year Trend Report for your presbytery. This report reflects data through 2009—the most recent year available.

If you would like a copy of your presbytery's data for additional analyses, please contact Ida Smith-Williams ([ida.smith-williams@pcusa.org](mailto:ida.smith-williams@pcusa.org) or 1-888-728-7228 ext. 5159). She will be happy to send you the data in an Excel spreadsheet.

We depend on your assistance and cooperation—and that of congregations in your presbytery—in gathering these and other data that we use to monitor trends in the denomination. Thank you for your help.

Keep in mind that Research Services provides other tools for presbyteries and congregations. Among the latter is a survey designed so that pastors and other congregational leaders can learn more about their worshipers and identify church strengths. The U.S. Congregational Life Survey is particularly helpful when congregations are searching for a new pastor, working on a self-study or mission study, or undergoing transition. We are willing to help a group of your congregations with the survey process or to conduct workshops on using the survey or on what we've learned about Presbyterian worshipers and congregations from the survey at educational events. We're happy to discuss these opportunities with you.

Please visit our website at [gamc.pcusa.org/ministries/research](http://gamc.pcusa.org/ministries/research), and use the "Help for Synods and Presbyteries" and "Help for Congregations" links for more information.

Please contact me if there is something else we can do for you. We look forward to working with you in the future.

Sincerely,

A handwritten signature in black ink, appearing to read "Jack Marcum".

Jack Marcum  
Coordinator  
Research Services  
[jack.marcum@pcusa.org](mailto:jack.marcum@pcusa.org)  
1-888-728-7228 ext. 5161

Other Research Services staff:

Joelle Anderson  
Deborah Bruce  
Perry Chang  
Hilary Harris

Rebecca Moody  
Christy Riggs  
Ida Smith-Williams



# **PRESBYTERY TEN-YEAR TREND REPORT**

Elizabeth Presbytery

**Research Services**  
**A Ministry of the General Assembly Mission Council**  
**Presbyterian Church (U.S.A.)**  
**100 Witherspoon Street**  
**Louisville, KY 40202**  
**1-888-728-7228 ext. 2040**

---

# PRESBYTERY TEN-YEAR TREND REPORT

---

This report for the presbytery provides data for the most recent 10 years compiled from the Session Annual Statistical Reports for congregations in the presbytery. The following tables and figures present trends on a large number of factors. Careful analysis of individual tables and consideration of key questions for each listed below will yield additional insights.

## Congregations and Membership (Table 1):

### Key Questions:

- What are the policies and strategies regarding new church developments in the presbytery?
- Are new church developments regarded as one avenue for increasing membership figures in the presbytery?
- What other presbytery-wide strategies exist to attract new members or to limit the loss of existing members?
- What unique resources are available to assist small-membership congregations (i.e., fewer than 100 members)?

## Distribution of Congregations by Membership Size (Table 2):

### Key Questions:

- How do presbytery staffing priorities reflect the needs of small, mid-size, and large congregations?
- How does the size distribution of congregations in the presbytery affect the resources of the presbytery and the demand for services?

## Distribution of Congregations by Average Weekly Worship Attendance (Table 3):

### Key Questions:

- What do the average worship attendance figures indicate about congregational vitality in the presbytery?
- What presbytery resources exist to assist congregations that seek to enhance their worship services, to attract more visitors to worship, or to add worship services?
- What patterns of clergy supply and demand result from the large percentage of small congregations?

## Membership and Population (Table 4):

### Key Questions:

- What presbytery-wide strategies exist to attract racial-ethnic persons so that membership reflects the racial-ethnic mix of the area?
- How are population shifts in the presbytery reflected in new church development strategies and redevelopment efforts?

## **Congregations with One-Fifth or More Minority Racial/Ethnic Membership (Table 5):**

### **Key Questions:**

- Does the presbytery employ a culturally-sensitive strategy to encourage the effectiveness of racial-ethnic congregations?
- Are there new church development policies and strategies for increasing the number of racial-ethnic congregations?
- Does the presbytery have a long range plan for evaluating ministry effectiveness and relevancy to racial-ethnic populations?

## **Descriptive Statistics of Ministers (Table 6):**

### **Key Questions:**

- Are congregations in the presbytery able to attract and support the clergy that they need?
- What presbytery policies and strategies exist for attracting and supporting women and/or racial-ethnic ministers?
- What role do Commissioned Lay Pastors play in meeting congregational leadership needs?

## **Membership and Total Contributions (Table 7):**

### **Key Questions:**

- From what types of receipts (e.g., investment income, bequests) have congregations and the presbytery benefited the most?
- What stewardship strategies and financial campaigns have been the most successful in generating new resources for the presbytery and its congregations?

## **Membership and Local Program and Local Mission Information (Table 8):**

### **Key Questions:**

- What does the level of funding for local programs and local missions suggest about the presbytery's priorities and the priorities of its congregations?
- What congregational and presbytery factors influence the stability of budgetary commitments over time?

## **Congregations Ranked by Validated Mission Expenditures (Table 9):**

### **Key Questions:**

- Have the top-ranking congregations in terms of validated mission expenditures consistently held these positions over the last ten years?
- Have some congregations made significant progress in their level of mission expenditures?
- What strategies or factors explain their success?

## **Congregations Ranked by Total Receipts (Table 10):**

### **Key Questions:**

- Have the congregations with the largest total receipts consistently held these positions over the last ten years?
- What factors contribute to year-to-year changes in these rankings?
- How do the rankings based on mission expenditures compare with the rankings based on total receipts?

## **Congregations Ranked by Per Member Giving (Table 11):**

### **Key Questions:**

- Which congregations experienced significant increases in per-member giving in the last 3 years?
- What can other congregations learn from their success?
- What training and resources can the presbytery provide to help congregations conduct effective stewardship campaigns?

## **Congregations by Year Organized (Table 12):**

### **Key Questions:**

- Given the large shifts in population concentrations in the last 40 years, where are existing congregations located in relationship to current population concentrations?
- What systematic analyses and resulting presbytery strategies have emerged to address demographic changes in the presbytery?

## **Gains and Losses, Inactives, and Church School Enrollment (Table 13):**

### **Key Questions:**

- How many of the “other losses” can be attributed to the loss of new members? What presbytery or congregational programs are in place to assimilate and retain new members?
- What do the trends in church school enrollment indicate about Christian education curriculum needs?
- Is there a regular evaluation process for assessing curriculum needs in the presbytery?
- How can the presbytery help congregations in their efforts to re-involve inactives in the life of the church?

## **Race/Ethnicity and Gender of Members, Elders, Deacons, and Ministers (Table 14):**

### **Key Questions:**

- What presbytery-wide efforts have occurred to develop lay leadership that is race and gender inclusive?
- What presbytery-wide efforts have occurred to develop pastoral leadership that is race and gender inclusive?

## **Growth in Average Worship Attendance (Table 15):**

### **Key Questions:**

- What percentage of congregations have achieved an increase in their average worship attendance over the last few years? What can other congregations learn from their experiences?
- How can the presbytery assist congregations in increasing worship attendance?

## **Congregations Ranked by Growth/Decline in Membership and Attendance (Table 16):**

### **Key Questions:**

- Does change in membership seem to be related to changes in worship attendance?
- How does the presbytery celebrate the success of congregations that are growing in membership or worship attendance?

# Presbytery Ten-Year Trend Report

## Table of Contents

Congregations and Members .....	Table 1
Distribution of Congregations by Membership Size .....	Table 2
Distribution of Congregations by Average Weekly Worship Attendance .....	Table 3
Membership and Population .....	Table 4
Congregations with One-Fifth or More Minority Racial/Ethnic Membership .....	Table 5
Descriptive Statistics of Ministers .....	Table 6
Membership and Total Contributions .....	Table 7
Membership and Local Program and Local Mission Information .....	Table 8
Congregations Ranked by Validated Mission Expenditures .....	Table 9
Congregations Ranked by Total Receipts .....	Table 10
Congregations Ranked by Per Member Giving .....	Table 11
Congregations by Year Organized .....	Table 12
Gains and Losses, Inactives, and Church School Enrollment .....	Table 13
Race Ethnicity and Gender of Members, Elders, Deacons, and Ministers .....	Table 14
Growth in Average Worship Attendance .....	Table 15
Congregations Ranked by Growth/Decline in Membership and Attendance .....	Table 16

**Elizabeth Presbytery - Table 1**  
**Congregations and Membership, 2000 - 2009**

	<b>2000</b>	<b>2001</b>	<b>2002</b>	<b>2003</b>	<b>2004</b>	<b>2005</b>	<b>2006</b>	<b>2007</b>	<b>2008</b>	<b>2009</b>
Number of Congregations	51	51	51	51	51	52	52	49	49	50
Reported Membership	16,704	16,420	16,009	15,831	15,459	15,087	14,638	14,296	13,849	13,215
Mean Number of Members Per Congregation	327.5	322.0	313.9	310.4	303.1	290.1	298.7	291.8	282.6	269.7
Median Number of Members Per Congregation	213.0	215.0	197.0	178.0	170.0	170.5	168.0	166.0	158.0	150.0
Number of Congregations with 100 Members or Less	11	11	12	13	14	17	14	12	14	16
% of Congregations with 100 Members or Less	21.6%	21.6%	23.5%	25.5%	27.5%	32.7%	26.9%	24.5%	28.6%	32.0%
Number of Congregations with 101 - 300 Members	21	21	20	19	18	19	20	23	21	21
% of Congregations with 101 - 300 Members	41.2%	41.2%	39.2%	37.3%	35.3%	36.5%	38.5%	46.9%	42.9%	42.0%
Number of Congregations with 301 - 500 Members	11	11	12	11	11	8	7	7	7	5
% of Congregations with 301 - 500 Members	21.6%	21.6%	23.5%	21.6%	21.6%	15.4%	13.5%	14.3%	14.3%	10.0%
Number of Congregations with more than 500 Members	8	8	7	8	8	8	8	7	7	7
% of Congregations with more than 500 Members	15.7%	15.7%	13.7%	15.7%	15.7%	15.4%	15.4%	14.3%	14.3%	14.0%
Net Change in Membership from Prior Year	-427	-284	-411	-178	-372	-372	-449	-342	-447	-634
% Change in Membership from Prior Year	-2.5%	-1.7%	-2.5%	-1.1%	-2.3%	-2.4%	-3.0%	-2.3%	-3.1%	-4.6%
Merged Churches	0	0	0	0	0	0	0	0	0	0
Churches Dissolved	0	0	0	0	0	0	0	0	0	0
Churches Dismissed	0	0	0	0	0	0	0	0	0	0

**Elizabeth Presbytery - Table 2**  
**Distribution of Congregations by Membership Size, 2000 - 2009**

Membership		2000	2001	2002	2003	2004	2005	2006	2007	2008	2009
Number	1-50	5	5	5	6	7	9	7	7	7	6
%	1-50	9.8%	9.8%	9.8%	11.8%	13.7%	17.3%	13.5%	14.3%	14.3%	12.0%
Number	51-100	6	6	7	7	7	8	7	5	7	10
%	51-100	11.8%	11.8%	13.7%	13.7%	13.7%	15.4%	13.5%	10.2%	14.3%	20.0%
Number	101-150	8	8	8	7	8	6	8	11	10	9
%	101-150	15.7%	15.7%	15.7%	13.7%	15.7%	11.5%	15.4%	22.4%	20.4%	18.0%
Number	151-200	5	6	6	7	6	6	5	5	4	4
%	151-200	9.8%	11.8%	11.8%	13.7%	11.8%	11.5%	9.6%	10.2%	8.2%	8.0%
Number	201-300	8	7	6	5	4	7	7	7	7	8
%	201-300	15.7%	13.7%	11.8%	9.8%	7.8%	13.5%	13.5%	14.3%	14.3%	16.0%
Number	301-500	11	11	12	11	11	8	7	7	7	5
%	301-500	21.6%	21.6%	23.5%	21.6%	21.6%	15.4%	13.5%	14.3%	14.3%	10.0%
Number	501-800	3	3	2	3	3	3	3	2	2	2
%	501-800	5.9%	5.9%	3.9%	5.9%	5.9%	5.8%	5.8%	4.1%	4.1%	4.0%
Number	801-1200	3	4	4	4	4	4	3	3	4	4
%	801-1200	5.9%	7.8%	7.8%	7.8%	7.8%	7.7%	5.8%	6.1%	8.2%	8.0%
Number	1201-1600	1	0	0	0	0	0	2	2	1	1
%	1201-1600	2.0%	0.0%	0.0%	0.0%	0.0%	0.0%	3.8%	4.1%	2.0%	2.0%
Number	1601-2000	1	1	1	1	1	1	0	0	0	0
%	1601-2000	2.0%	2.0%	2.0%	2.0%	2.0%	1.9%	0.0%	0.0%	0.0%	0.0%
Number	> 2000	0	0	0	0	0	0	0	0	0	0
%	> 2000	0.0%	0.0%	0.0%	0.0%	0.0%	0.0%	0.0%	0.0%	0.0%	0.0%
Total Number of Congregations		51	51	51	51	51	52	52	49	49	50

**Elizabeth Presbytery - Table 3**  
**Distribution of Congregations by Average Weekly Worship Attendance, 2000 - 2009**

Average Worship Attendance		2000	2001	2002	2003	2004	2005	2006	2007	2008	2009
Number	1-50	9	9	11	4	6	20	19	8	8	14
%	1-50	18.4%	19.6%	22.4%	11.4%	14.0%	21.4%	20.9%	19.5%	20.5%	28.6%
Number	51-100	16	13	15	12	19	18	19	16	18	21
%	51-100	32.7%	28.3%	30.6%	34.3%	44.2%	42.9%	44.2%	39.0%	46.2%	42.9%
Number	101-150	10	10	9	7	5	3	4	7	5	3
%	101-150	20.4%	21.7%	18.4%	20.0%	11.6%	7.1%	9.3%	17.1%	12.8%	6.1%
Number	151-200	4	5	4	2	3	2	1	0	0	2
%	151-200	8.2%	10.9%	8.2%	5.7%	7.0%	4.8%	2.3%	0.0%	0.0%	4.1%
Number	201-300	6	5	4	4	5	6	6	5	5	6
%	201-300	12.2%	10.9%	8.2%	11.4%	11.6%	14.3%	14.0%	12.2%	12.8%	12.2%
Number	301-500	1	3	4	4	3	2	2	3	1	1
%	301-500	2.0%	6.5%	8.2%	11.4%	7.0%	4.8%	4.7%	7.3%	2.6%	2.0%
Number	501-800	3	1	2	2	2	2	2	2	2	2
%	501-800	6.1%	2.2%	4.1%	5.7%	4.7%	4.8%	4.7%	4.9%	5.1%	4.1%
Number	801-1200	0	0	0	0	0	0	0	0	0	0
%	801-1200	0.0%	0.0%	0.0%	0.0%	0.0%	0.0%	0.0%	0.0%	0.0%	0.0%
Number	1201-1600	0	0	0	0	0	0	0	0	0	0
%	1201-1600	0.0%	0.0%	0.0%	0.0%	0.0%	0.0%	0.0%	0.0%	0.0%	0.0%
Number	1601-2000	0	0	0	0	0	0	0	0	0	0
%	1601-2000	0.0%	0.0%	0.0%	0.0%	0.0%	0.0%	0.0%	0.0%	0.0%	0.0%
Number	> 2000	0	0	0	0	0	0	0	0	0	0
%	> 2000	0.0%	0.0%	0.0%	0.0%	0.0%	0.0%	0.0%	0.0%	0.0%	0.0%
Mean Number of Worshipers		142.2	139.5	143.6	172.5	153.4	145.3	137.7	140.1	122.3	113.6
Median Number of Worshipers		99.0	106.5	94.0	102.0	95.0	88.5	81.0	80.0	70.0	69.0
Total Worship Attendance		6,968	6,419	7,034	6,038	6,597	6,102	5,920	5,746	4,771	5,566
Net Change in Worship from Prior Year		+96	-549	+615	-996	+559	-495	-182	-174	-975	+795
% Change in Worship from Prior Year		1.4%	-7.9%	9.6%	-14.2%	9.3%	-7.5%	-3.0%	-2.9%	-17.0%	16.7%
Worship Attendance as % of Members		42.4%	42.8%	45.8%	44.7%	45.4%	44.3%	42.2%	43.1%	39.0%	42.1%
Membership for Reporting Churches		16,448	14,993	15,358	13,509	14,541	13,787	14,042	13,333	12,246	13,215
Total Number of Reporting Churches		49	46	49	35	43	42	43	41	39	49

**Elizabeth Presbytery - Table 4**  
**Membership and Population, 2000 - 2009**

	<b>2000</b>	<b>2001</b>	<b>2002</b>	<b>2003</b>	<b>2004</b>	<b>2005</b>	<b>2006</b>	<b>2007</b>	<b>2008</b>	<b>2009</b>
Number of Members	16,704	16,420	16,009	15,831	15,459	15,087	14,638	14,296	13,849	13,215
Population in Report Area	1,764,115	1,783,418	1,803,038	1,822,983	1,843,258	1,863,871	1,884,829	1,906,138	1,927,806	1,949,839
% Population Change from Prior Year	1.1%	1.1%	1.1%	1.1%	1.1%	1.1%	1.1%	1.1%	1.1%	1.1%
Members as % of Total PC(USA) Membership	0.66%	0.66%	0.65%	0.66%	0.65%	0.65%	0.65%	0.65%	0.65%	0.64%
Number of Congregations	51	51	51	51	51	52	52	49	49	50
Number of Racial/Ethnic Members	1,195	1,215	1,222	1,322	951	1,368	969	1,330	1,362	1,347
% Racial/Ethnic of All Culturally Identified Members	7.8%	7.8%	9.6%	8.3%	6.9%	9.1%	7.1%	9.3%	9.8%	10.2%
Number of African-American Members	420	462	462	514	425	537	440	536	516	494
% African-American Members	2.7%	3.0%	3.6%	3.2%	3.1%	3.6%	3.2%	3.7%	3.7%	3.7%
Number of Asian Members	504	474	495	528	275	564	252	489	507	467
% Asian Members	3.3%	3.0%	3.9%	3.3%	2.0%	3.7%	1.9%	3.4%	3.7%	3.5%
Number of Hispanic Members	226	212	152	156	169	181	204	231	256	320
% Hispanic Members	1.5%	1.4%	1.2%	1.0%	1.2%	1.2%	1.5%	1.6%	1.8%	2.4%
Number of Native American Members	3	8	8	3	0	1	0	1	1	1
% Native American Members	0.0%	0.1%	0.1%	0.0%	0.0%	0.0%	0.0%	0.0%	0.0%	0.0%
Number of Other Members	42	59	105	121	82	85	73	73	82	65
% Other Members	0.3%	0.4%	0.8%	0.8%	0.6%	0.6%	0.5%	0.5%	0.6%	0.5%
Number of White, non-Hispanic Members	14,171	14,369	11,450	14,512	12,751	13,719	12,590	12,964	12,486	11,868
% White, non-Hispanic Members	92.2%	92.2%	90.4%	91.7%	93.1%	90.9%	92.9%	90.7%	90.2%	89.8%
Total Racial/Ethnic Population in Report Area	635,169	654,421	673,872	693,530	713,400	733,489	753,804	774,350	795,134	816,161
Total Number of Reporting Congregations	47	46	47	51	42	50	43	49	49	49

**Elizabeth Presbytery - Table 5**  
**Congregations with One-Fifth or More Minority Racial/Ethnic Membership, 2000 - 2009**

	2000	2001	2002	2003	2004	2005	2006	2007	2008	2009
African-American: 20% - 49%	0	1	3	3	3	3	3	5	4	5
African-American: 50% - 89%	0	0	0	0	0	0	0	0	0	0
African-American: 90% +	2	2	2	2	1	2	1	2	2	2
Asian: 20% - 49%	0	1	0	0	0	1	1	0	1	2
Asian: 50% - 89%	0	0	1	0	1	0	1	0	0	0
Asian: 90% +	1	1	1	1	0	2	0	2	2	2
Hispanic: 20% - 49%	1	0	0	0	0	0	1	1	2	3
Hispanic: 50% - 89%	1	1	1	1	1	1	1	1	1	0
Hispanic: 90% +	0	0	0	0	0	0	0	0	0	1
Native American: 20% - 49%	0	0	0	0	0	0	0	0	0	0
Native American: 50% - 89%	0	0	0	0	0	0	0	0	0	0
Native American: 90% +	0	0	0	0	0	0	0	0	0	0
Other: 20% - 49%	0	0	2	1	0	0	0	0	1	0
Other: 50% - 89%	0	0	0	0	0	0	0	0	0	0
Other: 90% +	0	0	0	0	0	0	0	0	0	0
<b>Total Number of Racial/Ethnic Congregations</b>	8	9	11	11	9	13	11	15	16	16
<b>Racial/Ethnic Congregations as % of Total</b>	15.7%	17.6%	21.6%	21.6%	17.6%	25.0%	21.2%	30.6%	32.7%	32.0%
<b>Total Number of Congregations</b>	51	51	51	51	51	52	52	49	49	50
<b>Total Number of Reporting Congregations</b>	47	46	47	51	42	50	43	49	49	49

Total Number of Racial/Ethnic Congregations includes any congregation where at least 20% of the membership is Minority/Racial Ethnic. This may include congregations where no single group exceeds 20% of membership.

**Elizabeth Presbytery - Table 6**  
**Descriptive Statistics of Ministers, 2000 - 2009**

	<b>2000</b>	<b>2001</b>	<b>2002</b>	<b>2003</b>	<b>2004</b>	<b>2005</b>	<b>2006</b>	<b>2007</b>	<b>2008</b>	<b>2009</b>
Total PCUSA Ministers	123	125	129	123	123	133	118	110	113	111
Active Ministers	96	95	97	93	93	97	87	79	80	80
Active Ministers as % of Total	78.0%	76.0%	75.2%	75.6%	75.6%	72.9%	73.7%	71.8%	70.8%	72.1%
Female Ministers	33	32	32	32	32	34	30	28	30	32
% Female Ministers	26.8%	25.6%	24.8%	26.0%	26.0%	25.6%	25.4%	25.5%	26.5%	28.8%
Racial/Ethnic Ministers	15	16	18	17	17	19	16	19	21	20
% Racial/Ethnic Ministers	17.4%	19.0%	20.5%	21.0%	21.0%	20.0%	19.3%	22.1%	22.8%	21.5%
Racial/Ethnic Female Ministers	0	0	1	1	1	3	1	2	3	4
% Racial/Ethnic Female Ministers	0.0%	0.0%	1.1%	1.2%	1.2%	3.2%	1.2%	2.3%	3.3%	4.3%
Racial/Ethnic Unidentified Min	37	41	41	42	42	39	35	24	21	18
Pastors/Co-Pastors	37	40	41	39	39	42	39	36	38	40
Asst/Associate Pastors	10	10	13	10	10	9	10	9	10	9
Supply Pastors	3	2	3	2	2	7	4	4	4	5
Interim Pastors	13	6	5	6	6	7	3	4	5	2
Chaplains	7	4	4	4	4	4	4	4	4	4
PC(USA) Executives	2	2	4	4	4	2	2	2	2	1
Schools	0	0	0	0	0	0	0	0	0	0
Counselors	3	3	3	3	3	4	4	4	3	1
Tentmakers	0	0	0	0	0	0	0	0	0	0
Other Professionals	0	0	0	0	0	1	0	0	0	0
Other	21	28	24	25	25	21	21	16	14	18
Retired	27	30	32	30	30	36	31	31	33	31

**Elizabeth Presbytery - Table 7**  
**Membership and Total Contributions, 2000 - 2009**

	<b>2000</b>	<b>2001</b>	<b>2002</b>	<b>2003</b>	<b>2004</b>	<b>2005</b>	<b>2006</b>	<b>2007</b>	<b>2008</b>	<b>2009</b>
Total Contributions (\$)	13,513,098	14,879,956	14,012,684	12,495,919	14,254,151	14,368,072	14,789,397	14,477,715	14,086,188	15,882,448
Total Membership for those Reporting Contributions	15,808	15,954	15,261	13,148	14,189	13,665	13,871	12,732	12,022	12,987
Contributions Per Member (\$)	854.83	932.68	918.20	950.40	1,004.59	1,051.45	1,066.21	1,137.11	1,171.70	1,222.95
Percent Change Per Member from Previous Year	8.3%	9.1%	-1.6%	3.5%	5.7%	4.7%	1.4%	6.6%	3.0%	4.4%
Capital and Building Funds Receipts (\$)	4,136,887	4,940,582	2,893,706	2,709,283	1,784,827	1,224,063	1,720,002	1,082,593	1,817,511	713,948
Investment Income (\$)	2,375,088	2,205,968	1,130,923	2,019,264	2,263,770	2,048,941	3,104,877	3,290,284	2,678,822	2,393,823
Bequests (\$)	599,191	3,735,127	956,419	586,687	1,547,121	1,316,979	1,516,400	2,133,442	2,973,310	1,010,487
Other Income (\$)	1,476,867	1,280,408	1,575,072	1,412,778	2,116,387	1,636,280	2,024,253	1,543,677	2,471,330	2,634,557
Total Receipts (\$)	22,101,131	27,042,041	20,568,804	19,223,931	21,966,256	20,594,335	23,154,929	22,527,711	24,027,161	22,635,263

**Elizabeth Presbytery - Table 8**  
**Membership and Local Program and Local Mission Information, 2000 - 2009**

	<b>2000</b>	<b>2001</b>	<b>2002</b>	<b>2003</b>	<b>2004</b>	<b>2005</b>	<b>2006</b>	<b>2007</b>	<b>2008</b>	<b>2009</b>
Total Disbursements to Local Program and Local Mission (\$)	13,910,278	14,683,188	15,823,348	13,480,274	15,446,214	15,547,688	15,840,288	16,200,772	17,818,552	18,150,104
Percent of Total Receipts	62.9%	54.3%	76.9%	70.1%	70.3%	75.5%	68.4%	71.9%	74.2%	80.2%
Total Membership for those Reporting Disbursements	15,869	15,839	15,261	13,148	14,229	13,238	13,782	12,538	12,022	12,910
Disbursements Per Member (\$)	876.57	927.03	1,036.85	1,025.27	1,085.54	1,174.47	1,149.35	1,292.13	1,482.16	1,405.89
Percent Change Per Member from Previous Year	11.7%	5.8%	11.8%	-1.1%	5.9%	8.2%	-2.1%	12.4%	14.7%	-5.1%
Local Program Expenditures (\$)	12,727,334	13,289,631	14,198,119	12,056,235	13,945,497	13,611,509	14,776,342	14,201,309	15,424,036	16,073,205
Local Mission Expenditures (\$)	1,182,944	1,393,557	1,625,229	1,424,039	1,500,717	1,936,179	1,063,946	1,999,463	2,394,516	2,076,899
Capital Expenditures (\$)	3,909,304	6,498,835	6,453,052	5,772,236	2,289,909	1,715,221	1,781,830	1,487,218	2,314,549	1,179,078
Investment Expenditures (\$)	1,115,135	654,956	1,379,043	302,408	1,277,707	517,006	1,691,070	1,421,355	552,397	1,439,848
Per Capita Apportionment (\$)	271,512	279,969	274,901	259,527	269,556	261,891	272,332	240,167	272,095	287,946
Validated Mission Total (\$)	1,445,082	1,229,483	1,104,508	925,250	958,865	877,102	708,332	752,444	743,060	686,689
Other Mission Total (\$)	330,981	568,484	669,464	757,417	628,025	418,696	435,521	575,263	692,705	613,686
Total Expenditures (\$)	20,982,292	23,914,915	25,704,316	21,497,112	20,870,276	19,337,604	20,729,373	20,677,219	22,393,358	22,357,351
Total Membership for those Reporting Validated Mission	15,693	15,536	15,088	11,910	13,319	11,095	10,751	10,688	11,016	11,403
Validated Mission Per Member (\$)	92.08	79.14	73.20	77.69	71.99	79.05	65.89	70.40	67.45	60.22
Percent Change Per Member from Previous Year	19.9%	-14.1%	-7.5%	6.1%	-7.3%	9.8%	-16.6%	6.8%	-4.2%	-10.7%

Note: Fields are blank when no data is reported; 0 (zero) may indicate values of zero, missing data, or "not reported."

**Elizabeth Presbytery - Table 9**  
**Congregations Ranked by Validated Mission Expenditures, 2000 - 2009**

<b>Church, City</b>		<b>2000</b>	<b>2001</b>	<b>2002</b>	<b>2003</b>	<b>2004</b>	<b>2005</b>	<b>2006</b>	<b>2007</b>	<b>2008</b>	<b>2009</b>
Basking Ridge, Basking Ridge	\$ Rank	\$196,484 (2)	\$126,350 (3)	\$119,912 (1)	\$88,750 (4)	\$105,816 (3)	\$205,050 (1)	\$112,541 (1)	\$81,752 (3)	\$55,062 (5)	\$64,594 (4)
Bethel, Plainfield	\$ Rank	\$3,992 (33)	-	\$3,208 (36)	-	-	-	\$1,600 (32)	-	-	\$600 (34)
Bethlehem, Pittstown	\$ Rank	\$44,734 (8)	\$37,701 (10)	\$39,777 (8)	\$40,410 (7)	\$40,851 (7)	-	\$43,566 (5)	\$42,923 (6)	\$44,365 (6)	\$41,914 (6)
Bethlen Magyar, Colonia	\$ Rank	\$1,000 (45)	-	-	-	-	-	-	-	-	-
Calvin, Linden	\$ Rank	\$40,551 (9)	\$42,047 (7)	\$43,500 (6)	\$46,615 (6)	\$46,300 (6)	\$47,862 (6)	\$56,123 (4)	\$47,601 (4)	\$55,566 (4)	\$50,855 (5)
Central, Summit	\$ Rank	\$134,017 (4)	\$177,320 (1)	\$106,709 (3)	\$136,121 (2)	\$131,072 (1)	\$103,000 (3)	\$103,000 (2)	\$135,645 (1)	\$103,000 (1)	\$90,000 (2)
Christ, Martinsville	\$ Rank	\$10,397 (26)	\$13,264 (23)	\$10,736 (26)	\$12,122 (18)	\$21,675 (14)	-	\$4,240 (26)	-	-	-
Clinton, Clinton	\$ Rank	\$32,125 (12)	\$39,035 (8)	\$35,152 (9)	\$18,409 (15)	\$27,857 (10)	\$6,268 (21)	-	-	-	\$2,843 (26)
Community, Edison	\$ Rank	\$24,337 (15)	\$28,634 (13)	\$27,500 (13)	\$28,200 (11)	\$30,260 (8)	\$30,500 (7)	\$30,750 (7)	\$42,000 (7)	\$40,000 (7)	\$36,000 (7)
Community, Mountainside	\$ Rank	\$4,000 (32)	\$5,737 (33)	\$5,803 (33)	\$7,500 (21)	\$7,825 (22)	-	\$5,000 (25)	-	\$2,775 (26)	-
Connecticut Farms, Union	\$ Rank	\$12,493 (23)	\$14,500 (21)	-	\$3,500 (25)	\$3,200 (33)	\$5,200 (25)	\$7,000 (20)	\$8,000 (20)	\$6,194 (23)	\$5,000 (21)
Crescent Avenue, Plainfield	\$ Rank	\$20,530 (17)	\$20,000 (18)	\$23,519 (15)	\$20,000 (14)	\$23,600 (13)	\$13,333 (13)	\$17,900 (12)	\$15,917 (15)	\$10,836 (17)	\$15,820 (12)
Elmora, Elizabeth	\$ Rank	\$5,500 (30)	\$5,500 (34)	-	-	-	-	-	-	-	-
Fanwood, Fanwood	\$ Rank	\$49,517 (7)	\$51,881 (5)	\$19,381 (20)	-	\$7,294 (24)	-	\$12,000 (16)	\$19,301 (13)	\$33,079 (8)	\$4,500 (23)

Note: Fields are blank when church did not exist that year; dash (-) indicate missing data, or "not reported."

<b>Church, City</b>		<b>2000</b>	<b>2001</b>	<b>2002</b>	<b>2003</b>	<b>2004</b>	<b>2005</b>	<b>2006</b>	<b>2007</b>	<b>2008</b>	<b>2009</b>
First, Avenel	\$	\$9,700	\$12,427	\$9,192	-	-	-	\$12,577	\$2,243	\$12,371	\$4,565
	Rank	(28)	(25)	(27)				(15)	(26)	(15)	(22)
First, Bernardsville	\$	\$2,643	-	\$1,000	-	-	-	-	-	\$750	\$650
	Rank	(38)		(42)						(30)	(33)
First, Carteret	\$	\$11,500	\$11,800	\$6,400	\$6,705	\$7,108	-	-	\$9,600	\$1,400	\$1,400
	Rank	(24)	(26)	(30)	(22)	(26)			(19)	(29)	(29)
First, Cranford	\$	\$9,812	\$9,699	\$27,573	\$31,382	\$19,500	\$28,436	\$26,546	\$25,939	\$28,058	\$23,357
	Rank	(27)	(28)	(12)	(9)	(15)	(8)	(8)	(10)	(10)	(10)
First, Dunellen	\$	\$20,208	\$27,703	\$20,539	\$14,953	\$17,842	\$10,000	\$1,150	\$19,889	-	\$3,000
	Rank	(18)	(14)	(17)	(16)	(17)	(16)	(33)	(12)		(25)
First, Elizabeth	\$	\$4,958	\$6,544	\$5,000	\$5,153	\$280	\$2,050	\$2,050	-	-	-
	Rank	(31)	(32)	(35)	(24)	(40)	(28)	(30)			
First, Fords	\$	\$655	\$500	\$653	\$555	\$375	\$260	\$375	\$350	\$220	\$150
	Rank	(46)	(44)	(44)	(28)	(39)	(32)	(36)	(31)	(32)	(38)
First, Iselin	\$	\$16,778	\$17,715	\$14,689	-	\$7,245	\$6,900	-	\$16,970	\$8,766	\$985
	Rank	(21)	(19)	(22)		(25)	(18)		(14)	(20)	(32)
First, Metuchen	\$	\$79,248	\$38,306	\$85,212	\$83,185	\$62,462	\$64,595	\$36,062	\$4,152	\$23,070	\$32,488
	Rank	(6)	(9)	(5)	(5)	(5)	(5)	(6)	(23)	(12)	(8)
First, Perth Amboy	\$	\$10,814	\$11,210	\$8,662	\$9,438	\$7,488	\$6,650	\$8,098	\$7,764	\$6,850	\$3,764
	Rank	(25)	(27)	(28)	(20)	(23)	(19)	(19)	(21)	(21)	(24)
First, Rahway	\$	\$17,304	\$14,214	\$19,975	\$12,313	\$12,314	\$5,329	-	-	\$12,313	\$12,313
	Rank	(20)	(22)	(19)	(17)	(20)	(24)			(16)	(14)
First, Roselle	\$	-	-	\$12,188	-	\$11,829	-	-	-	-	-
	Rank			(25)		(21)					
First, Springfield	\$	-	\$15,026	-	-	-	-	-	-	-	-
	Rank		(20)								
First, Woodbridge	\$	\$1,274	\$21,900	\$21,442	\$21,495	\$27,250	\$25,189	\$24,850	\$28,270	\$30,504	\$28,505
	Rank	(41)	(16)	(16)	(13)	(11)	(11)	(9)	(9)	(9)	(9)
Garwood, Garwood	\$	\$2,757	\$3,087	\$2,574	-	\$2,432	\$2,301	\$2,184	\$2,108	\$2,319	\$2,437
	Rank	(37)	(36)	(37)		(35)	(26)	(29)	(27)	(28)	(27)

Note: Fields are blank when church did not exist that year; dash (-) indicate missing data, or "not reported."

<b>Church, City</b>		<b>2000</b>	<b>2001</b>	<b>2002</b>	<b>2003</b>	<b>2004</b>	<b>2005</b>	<b>2006</b>	<b>2007</b>	<b>2008</b>	<b>2009</b>
Greystone, Elizabeth	\$	\$1,395	\$1,561	\$1,127	-	\$1,021	\$1,516	\$1,066	\$1,300	-	
	Rank	(40)	(40)	(41)		(38)	(29)	(34)	(28)		
Hillside Millenuim, Hillside	\$										-
	Rank										
Hillside, Hillside	\$	\$1,681	\$642	\$740	-	-	-				
	Rank	(39)	(43)	(43)							
Korean, Elizabeth	\$	-	-	\$6,000	-	-	-	-	-	-	-
	Rank			(31)							
Lamington, Bedminster	\$	\$30,500	\$31,000	\$31,500	\$32,000	\$26,047	-	\$20,000	\$10,000	\$10,000	\$10,511
	Rank	(13)	(12)	(10)	(8)	(12)		(11)	(18)	(18)	(15)
Liberty Corner, Liberty Corner	\$	\$204,876	\$161,077	\$41,181	\$90,005	\$62,499	\$112,443	-	\$44,495	\$76,406	\$105,772
	Rank	(1)	(2)	(7)	(3)	(4)	(2)		(5)	(3)	(1)
Linden, Linden	\$	\$3,030	\$1,941	\$2,028	\$1,623	\$2,600	-	\$3,030	\$748	\$177	\$421
	Rank	(35)	(39)	(38)	(26)	(34)		(28)	(29)	(33)	(37)
Lord of Hope, Edison	\$						\$1,000	\$6,767	-	-	-
	Rank						(30)	(21)			
Middlesex, Middlesex	\$	-	-	\$500	\$983	\$1,676	\$500	\$500	\$500	\$500	\$500
	Rank			(45)	(27)	(37)	(31)	(35)	(30)	(31)	(36)
New Providence, New Providence	\$	\$82,745	\$102,955	\$110,110	-	-	-	-	-	-	-
	Rank	(5)	(4)	(2)							
Oak Tree, Edison	\$	\$1,268	\$1,073	\$1,000	-	-	-	-	-	-	\$500
	Rank	(42)	(41)	(42)							(36)
Osceola, Clark	\$	\$17,762	\$20,917	\$20,420	-	\$17,025	\$13,480	\$11,246	\$23,900	\$24,250	\$1,347
	Rank	(19)	(17)	(18)		(18)	(12)	(17)	(11)	(11)	(30)
Pluckemin, Pluckemin	\$	\$27,459	\$13,000	\$13,825	\$11,200	\$14,699	\$12,000	\$14,071	-	\$14,865	\$15,864
	Rank	(14)	(24)	(23)	(19)	(19)	(14)	(13)		(14)	(11)
Second, Elizabeth	\$	\$3,600	\$4,200	\$5,122	\$500	\$5,753	\$5,957	\$6,110	\$3,601	\$3,601	\$7,000
	Rank	(34)	(35)	(34)	(29)	(29)	(23)	(22)	(24)	(24)	(17)
Second, Rahway	\$	\$1,109	\$7,959	\$5,904	-	-	-	\$5,300	-	-	\$2,000
	Rank	(44)	(29)	(32)				(24)			(28)

Note: Fields are blank when church did not exist that year; dash (-) indicate missing data, or "not reported."

<b>Church, City</b>		<b>2000</b>	<b>2001</b>	<b>2002</b>	<b>2003</b>	<b>2004</b>	<b>2005</b>	<b>2006</b>	<b>2007</b>	<b>2008</b>	<b>2009</b>
Siloam-Hope, Elizabeth	\$	\$7,100	\$800	\$12,912	\$6,522	\$6,000	\$6,000	\$6,000	\$6,187	\$6,592	\$6,900
	Rank	(29)	(42)	(24)	(23)	(28)	(22)	(23)	(22)	(22)	(18)
Third Westminster, Elizabeth	\$	\$34,558	\$37,666	\$31,313	\$30,779	\$29,534	\$27,288	\$13,332	\$11,955	\$9,086	\$8,429
	Rank	(11)	(11)	(11)	(10)	(9)	(9)	(14)	(16)	(19)	(16)
Townley, Union	\$	\$2,845	\$2,395	\$1,500	\$400	\$6,818	\$2,205	\$1,810	-	-	\$590
	Rank	(36)	(37)	(40)	(30)	(27)	(27)	(31)			(35)
Trinity United, Warren	\$	\$1,234	\$2,132	\$1,517	-	\$2,045	-	-	-	-	\$6,366
	Rank	(43)	(38)	(39)		(36)					(19)
United, Plainfield	\$	-	-	\$18,375	-	\$3,420	\$11,700	\$10,800	\$11,000	-	\$6,100
	Rank			(21)		(32)	(15)	(18)	(17)		(20)
Watchung Avenue, N Plainfield	\$	\$24,102	\$23,420	\$24,149	\$22,875	\$18,322	\$25,194	\$20,125	\$30,714	\$18,119	\$13,442
	Rank	(16)	(15)	(14)	(12)	(16)	(10)	(10)	(8)	(13)	(13)
Westfield, Westfield	\$	\$181,914	\$49,971	\$98,412	\$141,557	\$129,632	\$80,346	\$77,163	\$94,220	\$95,866	\$72,207
	Rank	(3)	(6)	(4)	(1)	(2)	(4)	(3)	(2)	(2)	(3)
Westminster, Berkeley Hts	\$	\$38,045	\$7,680	-	-	\$5,299	\$8,250	-	-	\$2,500	\$1,000
	Rank	(10)	(30)			(30)	(17)			(27)	(31)
Willow Grove, Scotch Plains	\$	\$12,531	\$6,994	\$6,577	-	\$4,600	\$6,300	\$3,400	\$3,400	\$3,600	\$2,000
	Rank	(22)	(31)	(29)		(31)	(20)	(27)	(25)	(25)	(28)

Note: Fields are blank when church did not exist that year; dash (-) indicate missing data, or "not reported."

**Elizabeth Presbytery - Table 10**  
**Congregations Ranked by Total Receipts, 2000 - 2009**

<b>Church, City</b>		<b>2000</b>	<b>2001</b>	<b>2002</b>	<b>2003</b>	<b>2004</b>	<b>2005</b>	<b>2006</b>	<b>2007</b>	<b>2008</b>	<b>2009</b>
Basking Ridge, Basking Ridge	\$	\$1,617,429	\$1,827,615	\$1,157,814	\$1,528,293	\$1,608,968	\$1,568,915	\$1,587,557	\$1,645,734	\$1,221,579	\$1,298,120
	Rank	(4)	(5)	(5)	(5)	(5)	(5)	(5)	(5)	(5)	(5)
Bethel, Plainfield	\$	\$236,657	-	\$140,810	-	\$96,020	\$96,020	\$92,681	-	\$86,075	\$66,500
	Rank	(24)		(36)		(39)	(35)	(40)		(37)	(45)
Bethlehem, Pittstown	\$	\$946,668	\$2,553,145	\$364,132	\$303,944	\$784,766	\$337,808	\$360,587	\$323,357	\$337,919	\$323,547
	Rank	(7)	(3)	(17)	(16)	(8)	(16)	(16)	(20)	(19)	(21)
Bethlen Magyar, Colonia	\$	\$4,432	-	-	-						
	Rank	(47)									
Calvin, Linden	\$	\$157,761	\$190,432	\$169,965	\$174,221	\$184,000	\$444,125	\$178,684	\$190,313	\$176,545	\$178,419
	Rank	(32)	(31)	(29)	(24)	(29)	(12)	(28)	(27)	(29)	(34)
Central, Summit	\$	\$1,438,911	\$1,480,312	\$1,491,576	\$1,574,482	\$1,658,180	\$1,789,964	\$1,751,877	\$1,903,586	\$2,918,690	\$1,481,214
	Rank	(5)	(6)	(4)	(4)	(4)	(3)	(3)	(4)	(1)	(4)
Christ, Martinsville	\$	\$147,755	\$169,323	\$121,624	\$143,696	\$136,536	-	\$122,489	-	\$93,236	-
	Rank	(33)	(35)	(39)	(27)	(34)		(37)		(36)	
Clinton, Clinton	\$	\$302,359	\$1,465,642	\$456,937	\$385,207	\$509,823	\$489,334	\$543,635	-	-	\$634,795
	Rank	(20)	(7)	(11)	(13)	(12)	(9)	(10)			(8)
Community, Edison	\$	\$196,174	\$212,724	\$225,817	\$271,980	\$318,951	\$396,626	\$405,123	\$397,644	\$311,796	\$356,854
	Rank	(29)	(26)	(22)	(18)	(19)	(14)	(13)	(17)	(20)	(17)
Community, Mountainside	\$	\$225,380	\$213,963	\$212,130	\$231,620	\$266,711	\$337,745	\$278,290	\$460,338	\$285,296	\$255,094
	Rank	(26)	(25)	(25)	(20)	(21)	(17)	(22)	(12)	(21)	(24)
Connecticut Farms, Union	\$	\$361,175	\$332,249	-	\$282,900	\$332,000	\$320,900	\$320,700	\$366,750	\$354,000	\$351,750
	Rank	(16)	(22)		(17)	(18)	(18)	(18)	(19)	(18)	(18)
Crescent Avenue, Plainfield	\$	\$390,670	\$417,363	\$409,409	\$390,000	\$409,000	\$381,719	\$171,597	\$445,403	\$823,720	\$520,880
	Rank	(14)	(17)	(13)	(12)	(15)	(15)	(29)	(14)	(9)	(12)
Elmora, Elizabeth	\$	\$134,282	\$78,878	-	-						
	Rank	(37)	(43)								
Fanwood, Fanwood	\$	\$675,632	\$700,775	\$392,166	\$419,461	\$442,557	\$409,000	\$402,054	\$573,622	\$1,020,355	\$461,407
	Rank	(9)	(11)	(15)	(10)	(14)	(13)	(14)	(7)	(8)	(14)

Note: Fields are blank when church did not exist that year; dash (-) indicate missing data, or "not reported."

<b>Church, City</b>		<b>2000</b>	<b>2001</b>	<b>2002</b>	<b>2003</b>	<b>2004</b>	<b>2005</b>	<b>2006</b>	<b>2007</b>	<b>2008</b>	<b>2009</b>
First, Avenel	\$	\$282,216	\$284,228	\$270,334	-	-	\$213,055	\$293,035	\$406,777	\$381,465	\$343,248
	Rank	(23)	(23)	(19)			(25)	(20)	(16)	(16)	(19)
First, Bernardsville	\$	\$109,974	\$200,333	\$154,423	-	-	-	-	-	\$222,921	\$223,918
	Rank	(41)	(29)	(32)						(25)	(26)
First, Carteret	\$	\$91,792	\$104,971	\$84,591	\$81,874	\$86,382	\$84,604	\$88,391	\$254,800	\$99,768	\$83,644
	Rank	(42)	(42)	(44)	(32)	(40)	(36)	(42)	(22)	(35)	(44)
First, Cranford	\$	\$598,841	\$509,575	\$380,242	\$521,378	\$523,094	\$464,370	\$660,232	\$533,728	\$533,731	\$632,086
	Rank	(10)	(15)	(16)	(8)	(11)	(10)	(9)	(9)	(13)	(9)
First, Dunellen	\$	\$430,354	\$413,836	\$457,534	\$479,133	\$598,156	\$605,840	\$858,561	\$557,024	-	\$544,000
	Rank	(13)	(18)	(10)	(9)	(10)	(8)	(7)	(8)		(11)
First, Elizabeth	\$	\$129,616	\$184,997	\$79,586	\$132,686	\$387,477	\$83,650	\$148,800	\$486,900	\$1,204,912	\$120,350
	Rank	(39)	(32)	(45)	(31)	(16)	(37)	(33)	(11)	(6)	(42)
First, Fords	\$	\$32,864	\$32,107	\$43,051	\$25,443	\$17,864	\$17,833	\$35,000	\$32,000	\$24,500	\$23,800
	Rank	(46)	(47)	(47)	(33)	(42)	(41)	(43)	(40)	(38)	(47)
First, Iselin	\$	\$189,898	\$194,107	\$175,235	-	\$169,700	\$148,885	-	\$109,947	\$211,247	\$192,017
	Rank	(30)	(30)	(28)		(31)	(32)		(37)	(26)	(28)
First, Metuchen	\$	\$814,214	\$708,915	\$722,333	\$1,128,585	\$790,038	\$833,447	\$873,964	\$974,050	\$783,502	\$874,197
	Rank	(8)	(10)	(6)	(6)	(7)	(6)	(6)	(6)	(10)	(7)
First, Perth Amboy	\$	\$123,255	\$1,079,452	\$165,284	\$226,829	\$306,733	\$273,008	\$204,644	\$223,792	\$239,566	\$191,251
	Rank	(40)	(9)	(30)	(21)	(20)	(20)	(25)	(24)	(22)	(29)
First, Rahway	\$	\$310,102	\$179,496	\$156,635	\$171,944	\$187,119	\$195,399	\$191,810	-	\$200,409	\$188,330
	Rank	(19)	(33)	(31)	(25)	(27)	(28)	(26)		(27)	(30)
First, Roselle	\$	-	-	\$141,879	-	\$76,995	\$72,867	\$166,663	\$178,880	\$164,900	\$153,689
	Rank			(34)		(41)	(39)	(31)	(29)	(32)	(39)
First, Springfield	\$	-	\$340,936	-	-	-	-	-	-	-	-
	Rank		(21)								
First, Woodbridge	\$	\$345,083	\$206,529	\$275,143	\$261,822	\$254,508	\$318,680	\$288,064	\$302,645	\$1,097,483	\$341,482
	Rank	(17)	(28)	(18)	(19)	(24)	(19)	(21)	(21)	(7)	(20)
Garwood, Garwood	\$	\$144,657	\$120,125	\$141,023	\$141,831	\$142,846	\$164,681	\$157,438	\$148,159	\$167,992	\$175,329
	Rank	(34)	(41)	(35)	(29)	(33)	(30)	(32)	(32)	(31)	(35)
Greystone, Elizabeth	\$	\$62,198	\$67,033	\$69,616	-	\$114,510	\$124,674	\$130,467	\$130,081	-	
	Rank	(43)	(44)	(46)		(38)	(33)	(36)	(35)		

Note: Fields are blank when church did not exist that year; dash (-) indicate missing data, or "not reported."

Church, City		2000	2001	2002	2003	2004	2005	2006	2007	2008	2009
Hillside Millenuim, Hillside	\$ Rank										\$159,513 (37)
Hillside, Hillside	\$ Rank	\$41,394 (45)	\$50,785 (46)	\$89,172 (42)	-	-	-				
Korean, Elizabeth	\$ Rank	\$475,563 (12)	\$526,005 (13)	\$545,931 (8)	-	-	-	-	-	-	\$626,893 (10)
Lamington, Bedminster	\$ Rank	\$1,007,822 (6)	\$2,657,998 (1)	\$430,188 (12)	\$394,554 (11)	\$346,438 (17)	-	\$391,509 (15)	\$387,835 (18)	\$679,966 (12)	\$363,249 (15)
Liberty Corner, Liberty Corner	\$ Rank	\$2,752,386 (1)	\$2,610,947 (2)	\$3,487,917 (1)	\$3,225,026 (1)	\$3,216,137 (1)	\$3,473,410 (1)	\$3,857,472 (1)	\$3,301,961 (1)	\$2,726,186 (2)	\$2,509,735 (2)
Linden, Linden	\$ Rank	\$138,421 (35)	\$136,325 (39)	\$149,563 (33)	\$143,204 (28)	\$130,932 (35)	-	\$130,512 (35)	\$142,536 (33)	\$139,975 (33)	\$186,445 (31)
Lord of Hope, Edison	\$ Rank						\$77,903 (38)	\$89,613 (41)	\$51,733 (38)	-	\$59,434 (46)
Middlesex, Middlesex	\$ Rank	\$374,667 (15)	\$173,946 (34)	\$405,321 (14)	\$178,344 (22)	\$148,746 (32)	\$116,272 (34)	\$110,836 (38)	\$135,148 (34)	\$459,017 (15)	\$209,054 (27)
New Providence, New Providence	\$ Rank	\$2,194,601 (2)	\$2,102,718 (4)	\$1,965,887 (2)	\$1,991,079 (3)	\$1,708,123 (3)	\$1,714,143 (4)	\$1,707,614 (4)	\$1,909,102 (3)	\$2,021,332 (4)	\$2,231,413 (3)
Oak Tree, Edison	\$ Rank	\$134,851 (36)	\$143,140 (38)	\$136,310 (37)	-	-	\$66,522 (40)	\$170,000 (30)	-	-	\$119,030 (43)
Osceola, Clark	\$ Rank	\$215,452 (27)	\$210,572 (27)	\$225,020 (23)	-	\$237,306 (25)	\$232,374 (23)	\$272,364 (23)	\$182,581 (28)	-	\$170,041 (36)
Pluckemin, Pluckemin	\$ Rank	\$484,182 (11)	\$516,400 (14)	\$695,610 (7)	\$736,540 (7)	\$760,644 (9)	\$703,653 (7)	\$836,793 (8)	\$422,000 (15)	\$702,778 (11)	\$969,517 (6)
Second, Elizabeth	\$ Rank	\$301,272 (21)	\$1,085,557 (8)	\$266,636 (20)	\$164,834 (26)	\$260,487 (23)	\$255,130 (22)	\$298,990 (19)	\$220,177 (25)	\$238,822 (23)	\$280,259 (22)
Second, Rahway	\$ Rank	\$172,021 (31)	\$148,515 (37)	\$92,338 (41)	-	-	-	\$109,593 (39)	-	-	\$129,164 (41)
Siloam-Hope, Elizabeth	\$ Rank	\$133,011 (38)	\$155,309 (36)	\$114,514 (40)	\$177,670 (23)	\$175,216 (30)	\$149,387 (31)	\$416,091 (12)	\$247,719 (23)	\$232,843 (24)	\$179,966 (33)
Third Westminster, Elizabeth	\$ Rank	\$344,184 (18)	\$346,139 (20)	\$265,310 (21)	\$307,552 (15)	\$853,114 (6)	\$459,067 (11)	\$427,303 (11)	\$517,658 (10)	\$509,858 (14)	\$518,855 (13)

Note: Fields are blank when church did not exist that year; dash (-) indicate missing data, or "not reported."

<b>Church, City</b>		<b>2000</b>	<b>2001</b>	<b>2002</b>	<b>2003</b>	<b>2004</b>	<b>2005</b>	<b>2006</b>	<b>2007</b>	<b>2008</b>	<b>2009</b>
Townley, Union	\$	\$197,745	\$129,034	\$124,009	\$139,000	\$120,993	\$197,814	\$131,501	\$126,437	\$123,797	\$157,831
	Rank	(28)	(40)	(38)	(30)	(37)	(27)	(34)	(36)	(34)	(38)
Trinity United, Warren	\$	\$55,634	\$59,954	\$86,119	-	\$123,548	-	-	-	-	\$153,378
	Rank	(44)	(45)	(43)		(36)					(40)
United, Plainfield	\$	-	-	\$203,710	-	\$261,829	\$178,000	\$170,000	\$178,000	-	\$261,750
	Rank			(26)		(22)	(29)	(30)	(30)		(23)
Watchung Avenue, N Plainfield	\$	\$291,723	\$358,922	\$474,516	\$308,583	\$443,372	\$260,528	\$350,931	\$452,801	\$368,368	\$360,362
	Rank	(22)	(19)	(9)	(14)	(13)	(21)	(17)	(13)	(17)	(16)
Westfield, Westfield	\$	\$2,059,492	\$664,307	\$1,940,656	\$2,580,216	\$2,398,672	\$2,100,712	\$2,973,944	\$3,167,919	\$2,512,056	\$2,564,463
	Rank	(3)	(12)	(3)	(2)	(2)	(2)	(2)	(2)	(3)	(1)
Westminster, Berkeley Hts	\$	-	\$444,292	\$196,108	-	\$185,000	\$228,932	\$214,332	\$218,751	\$174,000	\$180,507
	Rank		(16)	(27)		(28)	(24)	(24)	(26)	(30)	(32)
Willow Grove, Scotch Plains	\$	\$226,361	\$252,115	\$214,680	-	\$189,765	\$207,339	\$183,188	\$171,823	\$176,556	\$228,483
	Rank	(25)	(24)	(24)		(26)	(26)	(27)	(31)	(28)	(25)

Note: Fields are blank when church did not exist that year; dash (-) indicate missing data, or "not reported."

**Elizabeth Presbytery - Table 11**  
**Congregations Ranked by Per Member Giving, 2000 - 2009**

<b>Church, City</b>		<b>2000</b>	<b>2001</b>	<b>2002</b>	<b>2003</b>	<b>2004</b>	<b>2005</b>	<b>2006</b>	<b>2007</b>	<b>2008</b>	<b>2009</b>
Basking Ridge, Basking Ridge	\$ Rank	\$930.20 (15)	\$1,001.85 (13)	\$1,044.15 (11)	\$980.08 (10)	\$1,042.25 (12)	\$1,126.51 (11)	\$1,054.20 (17)	\$1,186.08 (14)	\$995.80 (16)	\$995.76 (20)
Bethel, Plainfield	\$ Rank	\$843.75 (17)	-	\$849.26 (22)	-	\$923.12 (15)	\$923.12 (18)	\$1,015.46 (18)	-	\$991.25 (17)	\$927.08 (23)
Bethlehem, Pittstown	\$ Rank	\$636.26 (30)	\$6,309.05 (1)	\$677.61 (28)	\$665.94 (23)	\$741.80 (23)	\$866.94 (20)	\$911.39 (23)	\$994.51 (17)	\$1,000.31 (15)	\$1,020.75 (18)
Bethlen Magyar, Colonia	\$ Rank	\$169.74 (47)	-	-	-						
Calvin, Linden	\$ Rank	\$922.58 (16)	\$996.62 (14)	\$953.56 (15)	\$1,087.11 (9)	\$1,035.90 (13)	\$1,040.80 (15)	\$1,105.49 (16)	\$1,137.17 (15)	\$1,119.29 (12)	\$1,153.39 (16)
Central, Summit	\$ Rank	\$811.76 (19)	\$996.12 (15)	\$1,027.96 (13)	\$1,105.07 (8)	\$1,206.75 (10)	\$1,120.11 (12)	\$1,205.18 (12)	\$1,239.87 (11)	\$1,347.94 (10)	\$1,159.45 (15)
Christ, Martinsville	\$ Rank	\$1,287.89 (9)	\$1,616.00 (5)	\$1,214.72 (9)	\$1,421.91 (6)	\$1,463.76 (8)	-	\$2,133.48 (3)	-	\$3,492.11 (1)	-
Clinton, Clinton	\$ Rank	\$533.02 (39)	\$559.39 (36)	\$635.45 (31)	\$916.24 (11)	\$863.56 (18)	\$815.10 (24)	\$839.21 (25)	-	-	\$889.06 (24)
Community, Edison	\$ Rank	\$1,380.38 (7)	\$1,514.04 (7)	\$1,580.24 (6)	\$1,589.17 (5)	\$1,996.16 (4)	\$1,918.81 (6)	\$1,953.81 (7)	\$1,944.59 (4)	\$2,000.94 (5)	\$2,178.81 (7)
Community, Mountainside	\$ Rank	\$544.49 (37)	\$636.03 (28)	\$612.31 (36)	\$636.14 (24)	\$681.95 (27)	\$730.09 (25)	\$719.65 (29)	\$702.22 (25)	\$817.81 (23)	\$752.23 (27)
Connecticut Farms, Union	\$ Rank	\$472.61 (43)	\$530.94 (37)	-	\$599.73 (28)	\$537.28 (36)	\$523.47 (34)	\$541.08 (39)	\$537.24 (34)	\$523.59 (36)	\$580.65 (40)
Crescent Avenue, Plainfield	\$ Rank	\$643.07 (28)	\$710.96 (25)	\$585.81 (41)	\$546.33 (31)	\$645.77 (33)	\$593.49 (33)	\$0.62 (44)	\$646.01 (29)	\$783.92 (26)	\$494.52 (43)
Elmora, Elizabeth	\$ Rank	\$362.51 (45)	\$317.31 (44)	-	-						
Fanwood, Fanwood	\$ Rank	\$1,201.26 (10)	\$912.66 (18)	\$858.24 (21)	\$790.44 (16)	\$809.28 (21)	\$819.89 (22)	\$835.16 (26)	\$939.57 (19)	\$959.72 (18)	\$952.93 (22)

Note: Fields are blank when church did not exist that year; dash (-) indicate missing data, or "not reported."

<b>Church, City</b>		<b>2000</b>	<b>2001</b>	<b>2002</b>	<b>2003</b>	<b>2004</b>	<b>2005</b>	<b>2006</b>	<b>2007</b>	<b>2008</b>	<b>2009</b>
First, Avenel	\$ Rank	\$503.03 (40)	\$784.22 (21)	\$604.35 (37)	-	-	\$464.11 (37)	\$730.59 (28)	\$731.69 (23)	\$757.94 (27)	\$620.08 (37)
First, Bernardsville	\$ Rank	\$660.44 (25)	\$32.89 (47)	\$964.57 (14)	-	-	-	-	-	\$830.58 (22)	\$1,091.98 (17)
First, Carteret	\$ Rank	\$546.37 (36)	\$566.95 (35)	\$632.27 (33)	\$593.56 (29)	\$691.92 (26)	\$624.54 (31)	\$644.92 (32)	\$696.63 (27)	\$801.04 (24)	\$624.96 (36)
First, Cranford	\$ Rank	\$655.09 (26)	\$685.55 (27)	\$597.59 (39)	\$673.14 (21)	\$636.99 (34)	\$670.28 (28)	\$701.60 (30)	\$674.93 (28)	\$654.16 (32)	\$689.12 (34)
First, Dunellen	\$ Rank	\$821.33 (18)	\$981.78 (16)	\$1,030.15 (12)	\$1,119.18 (7)	\$1,112.76 (11)	\$1,173.00 (9)	\$1,241.76 (11)	\$1,239.23 (12)	-	\$1,475.86 (11)
First, Elizabeth	\$ Rank	\$306.35 (46)	\$260.18 (45)	\$633.33 (32)	\$559.52 (30)	\$357.69 (41)	\$254.44 (41)	\$339.77 (43)	\$238.10 (39)	\$562.50 (34)	\$185.42 (47)
First, Fords	\$ Rank	\$490.15 (41)	\$447.93 (42)	\$432.43 (47)	\$544.80 (32)	\$357.64 (42)	\$393.31 (40)	\$363.64 (41)	\$375.00 (38)	\$370.00 (37)	\$303.23 (46)
First, Iselin	\$ Rank	\$584.19 (34)	\$593.18 (31)	\$572.33 (43)	-	\$659.30 (32)	\$612.83 (32)	-	\$610.23 (32)	\$902.48 (21)	\$724.35 (31)
First, Metuchen	\$ Rank	\$648.65 (27)	\$580.46 (32)	\$583.21 (42)	\$604.73 (27)	\$662.92 (29)	\$703.57 (27)	\$620.82 (35)	\$891.39 (20)	\$734.59 (29)	\$752.17 (28)
First, Perth Amboy	\$ Rank	\$609.83 (31)	\$726.08 (24)	\$539.52 (44)	\$683.06 (20)	\$619.66 (35)	\$888.79 (19)	\$975.39 (20)	\$764.26 (21)	\$734.72 (28)	\$465.11 (45)
First, Rahway	\$ Rank	\$542.69 (38)	\$570.85 (34)	\$522.23 (45)	\$791.05 (15)	\$881.66 (16)	\$816.42 (23)	\$995.00 (19)	-	\$791.04 (25)	\$729.33 (30)
First, Roselle	\$ Rank	-	-	\$476.27 (46)	-	\$503.24 (37)	\$458.28 (38)	\$547.42 (38)	\$526.18 (36)	\$676.82 (31)	\$701.24 (32)
First, Springfield	\$ Rank	-	\$448.42 (41)	-	-	-	-	-	-	-	-
First, Woodbridge	\$ Rank	\$1,127.04 (12)	\$427.73 (43)	\$879.12 (19)	\$825.14 (14)	\$822.92 (20)	\$1,143.23 (10)	\$1,203.90 (13)	\$1,214.12 (13)	\$931.30 (19)	\$861.50 (25)
Garwood, Garwood	\$ Rank	\$1,903.38 (2)	\$1,580.59 (6)	\$2,104.82 (2)	\$2,144.86 (1)	\$2,341.74 (2)	\$2,418.32 (1)	\$2,858.24 (2)	\$2,743.69 (2)	\$2,894.19 (2)	\$3,246.83 (3)

Note: Fields are blank when church did not exist that year; dash (-) indicate missing data, or "not reported."

<b>Church, City</b>		<b>2000</b>	<b>2001</b>	<b>2002</b>	<b>2003</b>	<b>2004</b>	<b>2005</b>	<b>2006</b>	<b>2007</b>	<b>2008</b>	<b>2009</b>
Greystone, Elizabeth	\$ Rank	\$435.64 (44)	\$462.81 (40)	\$756.44 (26)	-	\$468.06 (38)	\$517.40 (35)	\$516.85 (40)	\$643.27 (30)	-	
Hillside Millenuim, Hillside	\$ Rank										\$1,985.88 (10)
Hillside, Hillside	\$ Rank	\$1,000.72 (14)	\$1,217.03 (11)	\$1,407.48 (7)	-	-	-				
Korean, Elizabeth	\$ Rank	\$2,232.69 (1)	\$2,257.53 (2)	\$2,322.69 (1)	-	-	-	-	-	-	\$3,299.44 (2)
Lamington, Bedminster	\$ Rank	\$751.99 (21)	\$819.86 (19)	\$845.44 (23)	\$735.15 (18)	\$673.86 (28)	-	\$692.64 (31)	\$703.33 (24)	\$1,754.19 (7)	\$1,003.30 (19)
Liberty Corner, Liberty Corner	\$ Rank	\$1,442.69 (5)	\$1,431.10 (8)	\$1,639.93 (5)	\$1,691.08 (4)	\$1,861.72 (6)	\$1,966.24 (5)	\$2,011.26 (6)	\$1,810.23 (6)	\$1,880.89 (6)	\$2,011.69 (9)
Linden, Linden	\$ Rank	\$591.47 (33)	\$580.22 (33)	\$720.02 (27)	\$760.72 (17)	\$694.20 (25)	-	\$550.78 (37)	\$601.04 (33)	\$679.93 (30)	\$662.98 (35)
Lord of Hope, Edison	\$ Rank						\$2,018.73 (4)	\$4,000.00 (1)	\$4,311.08 (1)	-	\$3,962.27 (1)
Middlesex, Middlesex	\$ Rank	\$1,698.45 (4)	\$1,769.15 (4)	\$1,814.35 (3)	\$2,101.49 (2)	\$1,942.60 (5)	\$2,289.73 (2)	\$2,128.55 (4)	\$1,550.27 (7)	\$1,529.47 (9)	\$1,163.92 (14)
New Providence, New Providence	\$ Rank	\$1,761.90 (3)	\$1,770.35 (3)	\$1,749.14 (4)	\$1,922.14 (3)	\$2,155.42 (3)	\$2,207.87 (3)	\$2,105.27 (5)	\$2,277.42 (3)	\$2,407.96 (3)	\$2,572.17 (5)
Oak Tree, Edison	\$ Rank	\$732.64 (22)	\$742.66 (23)	\$617.34 (35)	-	-	\$464.18 (36)	\$1,196.58 (14)	-	-	\$609.88 (38)
Osceola, Clark	\$ Rank	\$699.52 (23)	\$688.14 (26)	\$812.35 (24)	-	\$1,022.87 (14)	\$939.43 (17)	\$1,137.96 (15)	\$971.18 (18)	-	\$759.03 (26)
Pluckemin, Pluckemin	\$ Rank	\$754.01 (20)	\$935.63 (17)	\$914.63 (17)	\$831.68 (13)	\$828.37 (19)	\$1,042.31 (14)	\$933.57 (22)	\$752.54 (22)	\$921.97 (20)	\$988.23 (21)
Second, Elizabeth	\$ Rank	\$1,413.85 (6)	\$613.53 (30)	\$877.04 (20)	\$489.27 (33)	\$662.24 (30)	\$965.59 (16)	\$736.17 (27)	\$536.06 (35)	\$553.92 (35)	\$476.19 (44)
Second, Rahway	\$ Rank	\$574.20 (35)	\$631.92 (29)	\$620.82 (34)	-	-	-	\$603.87 (36)	-	-	\$600.40 (39)

Note: Fields are blank when church did not exist that year; dash (-) indicate missing data, or "not reported."

<b>Church, City</b>		<b>2000</b>	<b>2001</b>	<b>2002</b>	<b>2003</b>	<b>2004</b>	<b>2005</b>	<b>2006</b>	<b>2007</b>	<b>2008</b>	<b>2009</b>
Siloam-Hope, Elizabeth	\$	\$1,164.23	\$769.33	\$899.70	\$883.98	\$875.62	\$1,106.48	\$1,438.05	\$1,899.24	\$2,041.26	\$2,127.36
	Rank	(11)	(22)	(18)	(12)	(17)	(13)	(9)	(5)	(4)	(8)
Third Westminster, Elizabeth	\$	\$637.84	\$497.43	\$590.38	\$671.24	\$466.24	\$719.65	\$954.69	\$1,272.26	\$1,094.77	\$693.47
	Rank	(29)	(38)	(40)	(22)	(39)	(26)	(21)	(9)	(13)	(33)
Townley, Union	\$	\$483.16	\$487.88	\$599.71	\$628.21	\$454.91	\$436.40	\$361.62	\$435.23	\$357.51	\$504.94
	Rank	(42)	(39)	(38)	(25)	(40)	(39)	(42)	(37)	(38)	(42)
Trinity United, Warren	\$	\$1,292.07	\$1,332.42	\$1,286.42	-	\$2,502.98	-	-	-	-	\$2,842.17
	Rank	(8)	(9)	(8)		(1)					(4)
United, Plainfield	\$	-	-	\$786.81	-	\$749.05	\$666.67	\$625.00	\$700.85	-	\$731.39
	Rank			(25)		(22)	(29)	(34)	(26)		(29)
Watchung Avenue, N Plainfield	\$	\$693.31	\$811.82	\$647.11	\$615.12	\$660.43	\$652.92	\$630.26	\$634.62	\$596.07	\$577.56
	Rank	(24)	(20)	(30)	(26)	(31)	(30)	(33)	(31)	(33)	(41)
Westfield, Westfield	\$	\$597.87	\$60.10	\$665.30	\$695.64	\$736.74	\$841.63	\$901.84	\$1,103.89	\$1,052.07	\$1,383.05
	Rank	(32)	(46)	(29)	(19)	(24)	(21)	(24)	(16)	(14)	(12)
Westminster, Berkeley Hts	\$	-	\$1,234.08	\$934.65	-	\$1,210.94	\$1,617.33	\$1,362.51	\$1,270.84	\$1,312.50	\$1,311.11
	Rank		(10)	(16)		(9)	(7)	(10)	(10)	(11)	(13)
Willow Grove, Scotch Plains	\$	\$1,041.74	\$1,024.40	\$1,116.46	-	\$1,530.76	\$1,389.28	\$1,457.33	\$1,324.85	\$1,739.55	\$2,337.66
	Rank	(13)	(12)	(10)		(7)	(8)	(8)	(8)	(8)	(6)

Note: Fields are blank when church did not exist that year; dash (-) indicate missing data, or "not reported."

**Elizabeth Presbytery - Table 12**  
**Congregations by Year Organized, 2000 - 2009**

	<b>2000</b>	<b>2001</b>	<b>2002</b>	<b>2003</b>	<b>2004</b>	<b>2005</b>	<b>2006</b>	<b>2007</b>	<b>2008</b>	<b>2009</b>
Number of Congregations	51	51	51	51	51	52	52	49	49	50
Number Year Organized Unknown	1	1	1	1	1	1	4	1	1	2
% Number Year Organized Unknown	2.0%	2.0%	2.0%	2.0%	2.0%	1.9%	7.7%	2.0%	2.0%	4.0%
Number Organized 5 Years or Less	0	0	0	0	0	1	1	1	1	2
% Organized 5 Years or Less	0.0%	0.0%	0.0%	0.0%	0.0%	1.9%	1.9%	2.0%	2.0%	4.0%
Number Organized 6 - 10 Years	0	0	0	0	0	0	0	0	0	0
% Organized 6 - 10 Years	0.0%	0.0%	0.0%	0.0%	0.0%	0.0%	0.0%	0.0%	0.0%	0.0%
Number Organized 11 - 20 Years	3	3	3	3	2	1	1	1	1	0
% Organized 11 - 20 Years	5.9%	5.9%	5.9%	5.9%	3.9%	1.9%	1.9%	2.0%	2.0%	0.0%
Number Organized 21 - 40 Years	9	9	9	7	8	9	7	6	5	6
% Organized 21 - 40 Years	17.6%	17.6%	17.6%	13.7%	15.7%	17.3%	13.5%	12.2%	10.2%	12.0%
Number Organized 41 Years or More	38	38	38	40	40	40	39	40	41	40
% Organized 41 Years or More	74.5%	74.5%	74.5%	78.4%	78.4%	76.9%	75.0%	81.6%	83.7%	80.0%

**Elizabeth Presbytery - Table 13**  
**Gains and Losses, Inactives, and Christian Education Enrollment, 2000 - 2009**

	2000	2001	2002	2003	2004	2005	2006	2007	2008	2009
Prof. Faith Gains <=17 (N)	269	220	279	234	261	174	205	229	173	206
Prof. Faith Gains <=17 Per 100 Members	1.6	1.3	1.7	1.5	1.6	1.1	1.4	1.6	1.2	1.5
Prof. Faith Gains >=18 (N)	454	487	505	345	337	346	348	324	302	262
Prof. Faith Gains >=18 Per 100 Members	2.7	2.9	3.1	2.2	2.1	2.2	2.3	2.2	2.1	1.9
Total Prof. Faith Gains (N)	723	707	784	579	598	520	553	553	475	468
Total Prof. Faith Gains Per 100 Members	4.2	4.2	4.8	3.6	3.8	3.4	3.7	3.8	3.3	3.4
Certificate Gains (N)	203	219	165	141	176	98	117	149	74	155
Certificate Gains Per 100 Members	1.2	1.3	1.0	0.9	1.1	0.6	0.8	1.0	0.5	1.1
Other Gains (N)	99	51	46	191	129	82	59	47	40	50
Other Gains Per 100 Members	0.6	0.3	0.3	1.2	0.8	0.5	0.4	0.3	0.3	0.4
Total Gains (N)	1,025	977	995	911	903	700	729	749	589	673
Total Gains Per 100 Members	6.0	5.8	6.1	5.7	5.7	4.5	4.8	5.1	4.1	4.9
Certificate Losses (N)	231	195	202	165	251	156	159	131	119	120
Certificate Losses Per 100 Members	1.3	1.2	1.2	1.0	1.6	1.0	1.1	0.9	0.8	0.9
Deaths (N)	260	234	170	178	216	192	193	184	167	184
Deaths Per 100 Members	1.5	1.4	1.0	1.1	1.4	1.2	1.3	1.3	1.2	1.3
Other Losses (N)	961	832	984	746	808	724	803	776	750	988
Other Losses Per 100 Members	5.6	5.0	6.0	4.7	5.1	4.7	5.3	5.3	5.2	7.1
Total Losses (N)	1,452	1,261	1,356	1,089	1,275	1,072	1,155	1,091	1,036	1,292
Total Losses Per 100 Members	8.5	7.5	8.3	6.8	8.1	6.9	7.7	7.5	7.2	9.3

	2000	2001	2002	2003	2004	2005	2006	2007	2008	2009
Infant/Children Baptisms (N)	350	287	330	280	261	258	248	237	155	177
Infant/Children Baptisms Per 100 Members	2.0	1.7	2.0	1.7	1.6	1.7	1.6	1.6	1.1	1.3
Adult Baptisms (N)	55	49	42	37	24	44	42	48	22	42
Adult Baptisms Per 100 Members	0.3	0.3	0.3	0.2	0.2	0.3	0.3	0.3	0.2	0.3
Christian Education Enrollment	6,123	6,627	7,358	6,311	6,449	6,446	6,621	6,613	5,959	5,968
Christian Education Enrollment as % of Membership	38.0%	43.7%	48.3%	46.9%	45.7%	47.8%	47.7%	50.5%	48.2%	45.4%
Inactives	3,795	3,553	3,157	2,896	3,120	2,980	2,542	2,689	2,824	3,358
Baptized Members	3,063	3,413	4,023	3,696	4,150	3,679	2,762	3,040	2,970	2,759
Adherents	23,562	23,386	23,189	22,423	22,729	21,746	19,942	20,025	19,643	19,332

## Elizabeth Presbytery - Table 14

### Race/Ethnicity and Gender of Members, Elders, Deacons, and Ministers, 2000 - 2009

Total Reported	2000	2001	2002	2003	2004	2005	2006	2007	2008	2009
Members: % White, non-Hispanic	92.2%	92.2%	90.4%	91.7%	93.1%	90.9%	92.9%	90.7%	90.2%	89.8%
Members: % African-American	2.7%	3.0%	3.6%	3.2%	3.1%	3.6%	3.2%	3.7%	3.7%	3.7%
Members: % Asian	3.3%	3.0%	3.9%	3.3%	2.0%	3.7%	1.9%	3.4%	3.7%	3.5%
Members: % Hispanic	1.5%	1.4%	1.2%	1.0%	1.2%	1.2%	1.5%	1.6%	1.8%	2.4%
Members: % Native American	0.0%	0.1%	0.1%	0.0%	0.0%	0.0%	0.0%	0.0%	0.0%	0.0%
Members: % Other	0.3%	0.4%	0.8%	0.8%	0.6%	0.6%	0.5%	0.5%	0.6%	0.5%
Elders: % White, non-Hispanic	90.2%	89.2%	88.4%	88.6%	86.3%	85.9%	88.3%	85.2%	94.9%	82.3%
Elders: % African-American	5.9%	6.6%	6.7%	5.5%	7.8%	7.9%	5.9%	7.3%	2.5%	9.4%
Elders: % Asian	2.2%	2.4%	2.7%	2.2%	2.2%	2.7%	2.1%	4.0%	1.4%	3.1%
Elders: % Hispanic	1.0%	1.0%	1.3%	2.0%	1.9%	2.5%	2.7%	2.7%	0.9%	3.7%
Elders: % Native American	0.0%	0.2%	0.2%	0.0%	0.0%	0.0%	0.0%	0.0%	0.0%	0.0%
Elders: % Other	0.8%	0.7%	0.6%	1.8%	1.7%	0.9%	1.1%	0.8%	0.2%	1.5%
Deacons: % White, non-Hispanic	85.2%	83.3%	82.9%	87.2%	85.4%	81.2%	86.2%	79.3%	92.8%	78.1%
Deacons: % African-American	5.6%	6.9%	7.4%	5.0%	8.0%	9.3%	7.5%	7.0%	3.1%	9.0%
Deacons: % Asians	6.4%	5.9%	5.9%	2.8%	2.1%	3.8%	2.9%	9.0%	3.4%	7.5%
Deacons: % Hispanic	2.0%	2.5%	2.8%	4.0%	3.4%	3.8%	2.3%	3.0%	0.2%	3.4%
Deacons: % Native American	0.0%	0.2%	0.2%	0.0%	0.0%	0.0%	0.0%	0.0%	0.0%	0.0%
Deacons: % Other	0.8%	1.3%	0.8%	1.0%	1.1%	2.0%	1.1%	1.7%	0.5%	2.0%
Ministers: % White, non-Hispanic	82.6%	81.0%	79.5%	79.0%	79.0%	80.0%	80.7%	77.9%	77.2%	78.5%
Ministers: % African-American	7.0%	7.1%	6.8%	7.4%	7.4%	7.4%	8.4%	10.5%	10.9%	10.8%
Ministers: % Asian	7.0%	7.1%	8.0%	8.6%	8.6%	8.4%	7.2%	7.0%	7.6%	7.5%
Ministers: % Hispanic	3.5%	4.8%	5.7%	4.9%	4.9%	3.2%	3.6%	4.7%	4.3%	3.2%
Ministers: % Native American	0.0%	0.0%	0.0%	0.0%	0.0%	0.0%	0.0%	0.0%	0.0%	0.0%
Ministers: % Other	0.0%	0.0%	0.0%	0.0%	0.0%	1.1%	0.0%	0.0%	0.0%	0.0%
Members: % Female	59.9%	59.9%	59.8%	58.4%	59.4%	61.0%	59.1%	60.8%	60.3%	59.0%
Members: % Male	40.1%	40.1%	40.2%	41.6%	40.6%	39.0%	40.9%	39.2%	39.7%	41.0%
Elders: % Female	54.2%	52.6%	51.3%	52.3%	50.5%	51.4%	51.4%	51.1%	53.4%	50.3%
Elders: % Male	47.5%	47.4%	48.7%	47.7%	49.5%	48.6%	48.6%	48.9%	46.6%	49.7%
Deacons: % Female	77.6%	71.5%	72.1%	70.4%	71.2%	69.7%	69.5%	69.5%	70.9%	71.4%
Deacons: % Male	31.1%	28.5%	27.9%	29.6%	28.8%	30.3%	30.5%	30.5%	29.1%	28.6%
Ministers: % Female	26.8%	25.6%	24.8%	26.0%	26.0%	25.6%	25.4%	25.5%	26.5%	28.8%
Ministers: % Male	73.2%	74.4%	75.2%	74.0%	74.0%	74.4%	74.6%	74.5%	73.5%	71.2%

**Elizabeth Presbytery - Table 15**  
**Growth in Average Worship Attendance, 2000 - 2009**

<b>Congregations with:</b>	<b>2000</b>	<b>2001</b>	<b>2002</b>	<b>2003</b>	<b>2004</b>	<b>2005</b>	<b>2006</b>	<b>2007</b>	<b>2008</b>	<b>2009</b>
Large Decline in Worship Attendance (More than 10% from Previous Year)	12	8	9	5	6	10	8	16	13	10
Moderate Decline in Worship Attendance (6 - 10% from Previous Year)	4	4	8	3	8	10	6	3	5	7
Small Decline in Worship Attendance (1 - 5% from Previous Year)	8	7	4	9	6	5	8	6	7	8
Stable Worship Attendance (Zero % Change from Previous Year)	5	8	7	5	6	6	8	8	4	4
Small Growth in Worship Attendance (1 - 5% from Previous Year)	6	5	3	5	3	3	3	1	3	2
Moderate Growth in Worship Attendance (6 - 10% from Previous Year)	6	3	5	4	1	1	4	3	2	3
Large Growth in Worship Attendance (More than 10% from Previous Year)	5	9	8	3	4	4	1	2	1	5
Number of Reporting Congregations	46	44	44	34	34	39	38	39	35	39
Number of Congregations	51	51	51	51	51	52	52	49	49	50

## Elizabeth Presbytery - Table 16

### Congregations Ranked by Growth and Decline in Membership and Worship Attendance, 2003 to 2009

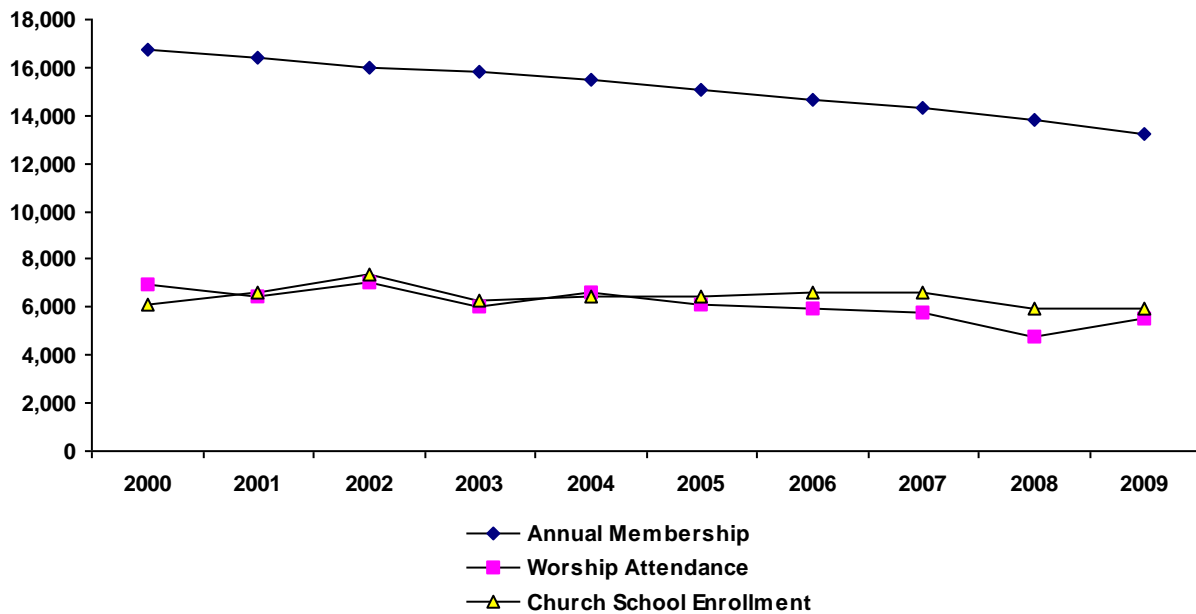
		Membership 2003	Membership 2009	Net Membership Change	Percent Change	Worship 2003	Worship 2009	Net Worship Change	Percent Change
Basking Ridge, Basking Ridge	Number Rank	1,068	1,001	-67 (30)	-6.27% (8)	380	284	-96 (27)	-25.26% (19)
Bethel, Plainfield	Number Rank	98	48	-50 (23)	-51.02% (46)	0	25		No report both years
Bethlehem, Pittstown	Number Rank	357	254	-103 (36)	-28.85% (35)	197	126	-71 (25)	-36.04% (28)
Bethlen Magyar, Colonia	Number Rank								No report both years
Calvin, Linden	Number Rank	152	132	-20 (13)	-13.16% (17)	92	59	-33 (17)	-35.87% (27)
Central, Summit	Number Rank	1,138	884	-254 (41)	-22.32% (27)	425	235	-190 (30)	-44.71% (29)
Christ, Martinsville	Number Rank	85	15	-70 (31)	-82.35% (47)	35	12	-23 (14)	-65.71% (33)
Clinton, Clinton	Number Rank	390	398	8 (2)	2.05% (4)	250	210	-40 (20)	-16.00% (11)
Community, Edison	Number Rank	139	114	-25 (15)	-17.99% (23)	93	94	1 (3)	1.08% (3)
Community, Mountainside	Number Rank	321	294	-27 (16)	-8.41% (9)	102	72	-30 (16)	-29.41% (23)
Connecticut Farms, Union	Number Rank	365	310	-55 (25)	-15.07% (20)	144	95	-49 (22)	-34.03% (26)
Crescent Avenue, Plainfield	Number Rank	313	321	8 (2)	2.56% (3)	88	69	-19 (12)	-21.59% (15)
Elmora, Elizabeth	Number Rank								No report both years

		Membership 2003	Membership 2009	Net Membership Change	Percent Change	Worship 2003	Worship 2009	Net Worship Change	Percent Change
Fanwood, Fanwood	Number Rank	422	365	-57 (27)	-13.51% (18)	156	122	-34 (18)	-21.79% (16)
First, Avenel	Number Rank	355	205	-150 (38)	-42.25% (42)	0	85		No report both years
First, Bernardsville	Number Rank	116	122	6 (3)	5.17% (2)	0	80		No report both years
First, Carteret	Number Rank	91	80	-11 (9)	-12.09% (16)	40	38	-2 (5)	-5.00% (6)
First, Cranford	Number Rank	527	522	-5 (7)	-0.95% (7)	205	172	-33 (17)	-16.10% (12)
First, Dunellen	Number Rank	327	290	-37 (19)	-11.31% (15)	286	205	-81 (26)	-28.32% (21)
First, Elizabeth	Number Rank	48	48	0 (5)	0.00% (6)	43	40	-3 (6)	-6.98% (7)
First, Fords	Number Rank	40	31	-9 (8)	-22.50% (28)	20	20	0 (4)	0.00% (4)
First, Iselin	Number Rank	221	165	-56 (26)	-25.34% (31)	105	70	-35 (19)	-33.33% (25)
First, Metuchen	Number Rank	978	712	-266 (42)	-27.20% (33)	350	250	-100 (28)	-28.57% (22)
First, Perth Amboy	Number Rank	125	112	-13 (11)	-10.40% (13)	63	55	-8 (9)	-12.70% (9)
First, Rahway	Number Rank	169	153	-16 (12)	-9.47% (11)	76	58	-18 (11)	-23.68% (18)
First, Roselle	Number Rank	186	111	-75 (32)	-40.32% (40)	0	63		No report both years
First, Springfield	Number Rank	306	213	-93 (34)	-30.39% (36)	0	78		No report both years
First, Woodbridge	Number Rank	307	264	-43 (21)	-14.01% (19)	125	120	-5 (7)	-4.00% (5)

		Membership 2003	Membership 2009	Net Membership Change	Percent Change	Worship 2003	Worship 2009	Net Worship Change	Percent Change
Garwood, Garwood	Number Rank	66	54	-12 (10)	-18.18% (24)	62	56	-6 (8)	-9.68% (8)
Greystone, Elizabeth	Number Rank	18			No report both years	0	0		No report both years
Hillside Millenuim, Hillside	Number Rank		77		No report both years		30		No report both years
Hillside, Hillside	Number Rank				No report both years				No report both years
Korean, Elizabeth	Number Rank	235	190	-45 (22)	-19.15% (25)	0	210		No report both years
Lamington, Bedminster	Number Rank	498	290	-208 (40)	-41.77% (41)	122	94	-28 (15)	-22.95% (17)
Liberty Corner, Liberty Corner	Number Rank	1,091	1,096	5 (4)	0.46% (5)	674	545	-129 (29)	-19.14% (13)
Linden, Linden	Number Rank	178	150	-28 (17)	-15.73% (21)	66	71	5 (2)	7.58% (1)
Lord of Hope, Edison	Number Rank		15		No report both years		13		No report both years
Middlesex, Middlesex	Number Rank	67	51	-16 (12)	-23.88% (30)	75	59	-16 (10)	-21.33% (14)
New Providence, New Providence	Number Rank	750	849	99 (1)	13.20% (1)	536	548	12 (1)	2.24% (2)
Oak Tree, Edison	Number Rank	140	75	-65 (29)	-46.43% (43)	60	40	-20 (13)	-33.33% (25)
Osceola, Clark	Number Rank	277	182	-95 (35)	-34.30% (37)	0	80		No report both years
Pluckemin, Pluckemin	Number Rank	505	422	-83 (33)	-16.44% (22)	229	169	-60 (24)	-26.20% (20)
Second, Elizabeth	Number Rank	130	105	-25 (15)	-19.23% (26)	136	65	-71 (25)	-52.21% (31)

		Membership 2003	Membership 2009	Net Membership Change	Percent Change	Worship 2003	Worship 2009	Net Worship Change	Percent Change
Second, Rahway	Number Rank	102	73	-29 (18)	-28.43% (34)	0	47		No report both years
Siloam-Hope, Elizabeth	Number Rank	98	75	-23 (14)	-23.47% (29)	70	50	-20 (13)	-28.57% (22)
Third Westminster, Elizabeth	Number Rank	236	122	-114 (37)	-48.31% (45)	97	45	-52 (23)	-53.61% (32)
Townley, Union	Number Rank	156	94	-62 (28)	-39.74% (39)	90	46	-44 (21)	-48.89% (30)
Trinity United, Warren	Number Rank	45	41	-4 (6)	-8.89% (10)	0	48		No report both years
United, Plainfield	Number Rank	155	115	-40 (20)	-25.81% (32)	0	45		No report both years
Watchung Avenue, N Plainfield	Number Rank	265	238	-27 (16)	-10.19% (12)	101	68	-33 (17)	-32.67% (24)
Westfield, Westfield	Number Rank	1,746	1,562	-184 (39)	-10.54% (14)	445	385	-60 (24)	-13.48% (10)
Westminster, Berkeley Hts	Number Rank	173	90	-83 (33)	-47.98% (44)	0	51		No report both years
Willow Grove, Scotch Plains	Number Rank	136	85	-51 (24)	-37.50% (38)	0	64		No report both years

**Figure 1**  
**Membership, Worship Attendance, and Christian Education Enrollment**  
 2000 - 2009  
 Elizabeth Presbytery



The graph above shows the number of members, the total average worship attendance of congregations, and the number of persons enrolled in Christian education in congregations in your presbytery for the most recent 10 years.

**Membership:** The average Presbyterian Church has 97 members (the median in 2009). In 2009, 51% of all congregations had 100 or fewer members.

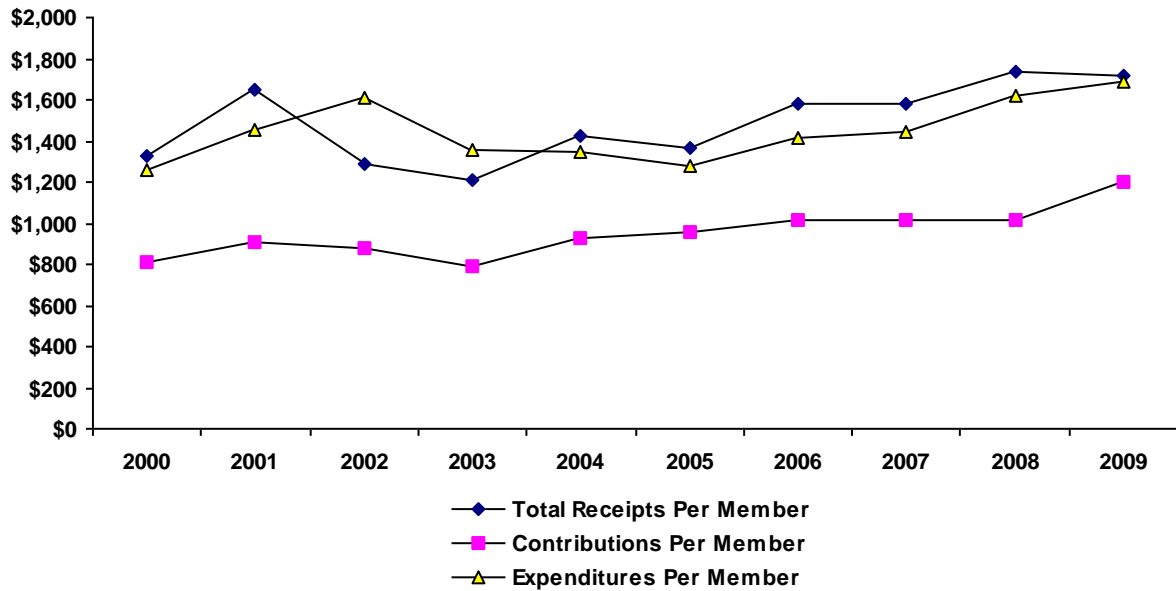
**Worship Attendance:** Average worship attendance was first reported in 1990. The average (median) worship attendance for all Presbyterian Church (U.S.A.) congregations is 65 persons.

**Christian Education Enrollment:** The total Christian education enrollment for all PCUSA congregations has been stable during the last 10 years. Most PCUSA congregations, regardless of size, report Christian education enrollment that is less than half of their congregation's total membership.

**Key Questions:**

- \* How would you describe the membership, worship attendance, and Christian education enrollment trends in your presbytery?
- \* What is the relationship between these three trends for the most recent 10 years?
- \* What factors might explain church growth, stability or decline in these three areas?
- \* How can your presbytery provide resources and support for small membership churches?
- \* What actions might be taken to create more positive trends in the next 10 years?

**Figure 2**  
**Total Receipts, Contributions, and Expenditures Per Member**  
 2000 - 2009  
 Elizabeth Presbytery



The graph above shows the total receipts, contributions, and expenditures per member in your presbytery for the most recent 10 years.

**Total Receipts:** In 2009, the PCUSA average total receipts per reporting member was \$1,559.81. The average total receipts per member will exceed average contributions per member because total receipts include "contributions from living donors" as well as bequests, investment income, and other non-contribution income.

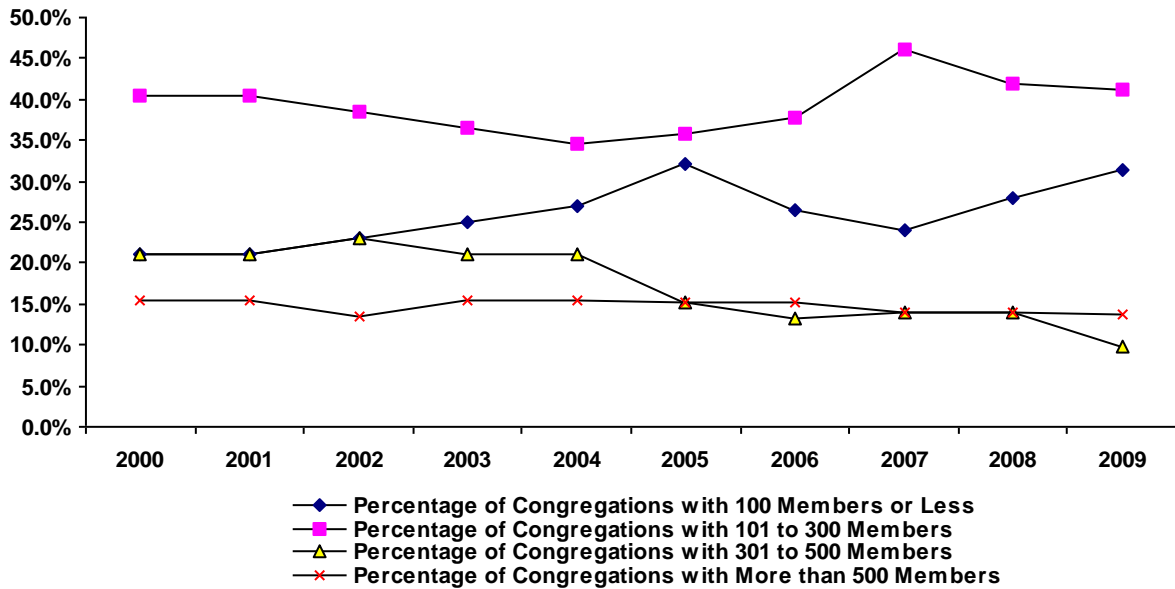
**Contributions:** Among all PCUSA reporting congregations the average contribution per member in 2009 was \$1,108.32.

**Expenditures:** The average PCUSA expenditure per reporting member in 2009 was \$1,487.16.

**Key Questions:**

- \* How would you describe the trends in receipts, contributions, and expenditures for the most recent 10 years?
- \* Have the three trends increased at about the same rate over the 10-year period?
- \* What factors explain these trends (e.g., membership loss or gain, stewardship programs)?
- \* How does your presbytery compare to the PCUSA average in receipts, contributions, and expenditures per member?

**Figure 3**  
**Percentages of Congregations in Size Categories**  
 2000 - 2009  
 Elizabeth Presbytery

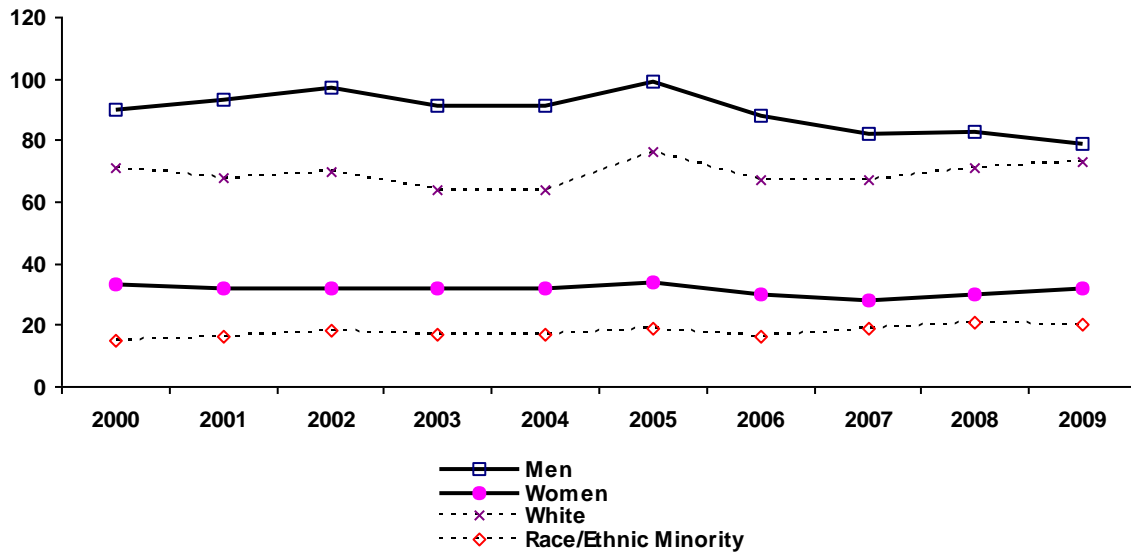


The graph above shows the distribution of congregations in your presbytery across four size categories: small congregations (100 members or less); mid-size congregations (101 to 300 members); large congregations (301 to 500 members); and very large congregations (more than 500 members). The largest group of congregations among all PCUSA congregations has 100 or fewer members (51%). Nearly one-third (32%) of PCUSA congregations are mid-size (101 to 300 members). Large congregations (301-500 members) comprise just 9% of the total. Almost the same number of churches are in the "very large" congregation category (501 members or more) --- 8%.

**Key Questions:**

- \* Which size category of congregation is most likely to be found in your presbytery?
- \* Has this changed in the most recent 10 years?
- \* What presbytery programs, resources, and support address the unique needs of congregations in each size category?
- \* Do presbytery priorities reflect the needs of small, mid-size, large, and very large congregations?

**Figure 4**  
**Number of Active Ministers by Gender and Race/Ethnicity**  
 2000 - 2009  
 Elizabeth Presbytery

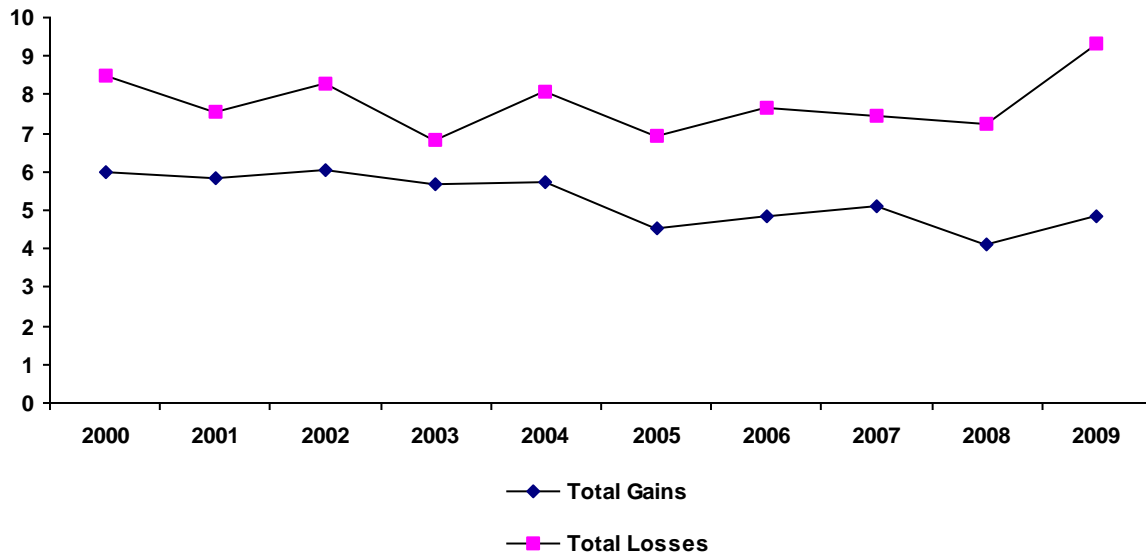


The graph above shows the number of active male ministers, active female ministers, active white ministers, and active racial/ethnic minority ministers in your presbytery for the most recent 10 years. Of all PCUSA active ministers, approximately 32 percent are female. PCUSA ministers are mostly white. In 2009, there were 1,365 active racial/ethnic minority ministers (10% of the total active), which has slightly increased from 8% from five years earlier (2004).

**Key Questions:**

- \* How would you describe the supply and demand of pastoral leadership in your presbytery?
- \* Has the number of active ministers increased or decreased during the past 10 years?
- \* How does this number compare to the number of congregations in the presbytery?
- \* What is the ratio of female to male ministers in your presbytery?
- \* What steps has the presbytery taken to promote female leadership in parish ministry?
- \* What is the ratio of racial/ethnic minority ministers to white ministers in your presbytery?
- \* What steps has the presbytery taken to promote racial/ethnic minority leadership in parish ministry?

**Figure 5**  
**Total Gains and Total Losses Per 100 Members**  
 2000 - 2009  
 Elizabeth Presbytery

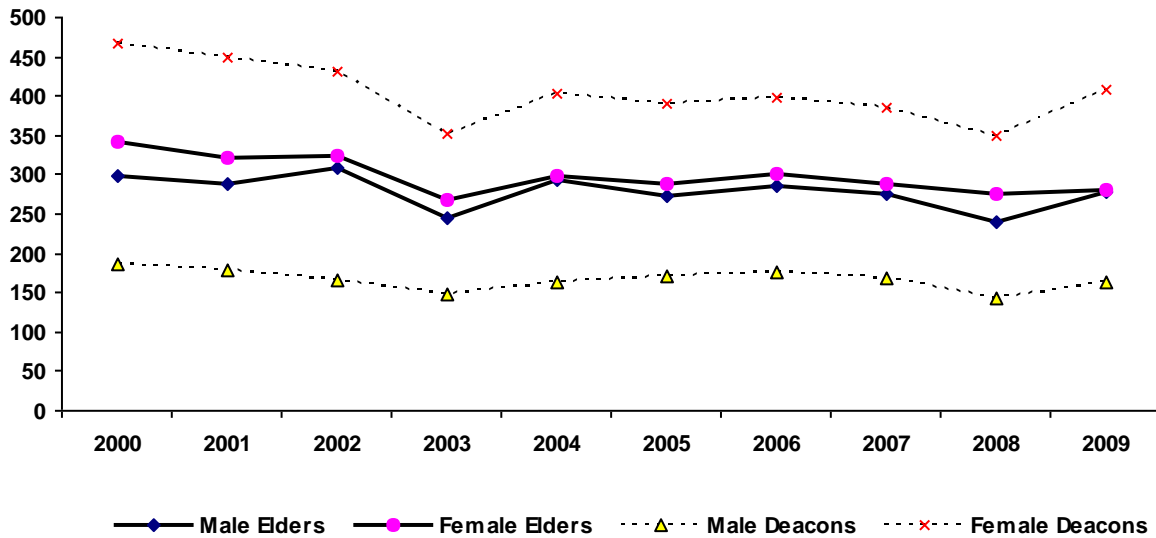


The graph above compares total gains per 100 members with total losses per 100 members in your presbytery for the most recent 10 years. Membership for the Presbyterian Church (U.S.A.) and its predecessor denominations (the UPCUSA and the PCUS) peaked in the early 1960s, then began a steady, slow decline. From 2000 to 2009, PCUSA membership has declined about 1.8% annually. Changes in membership result from the difference between new members added (membership gains) and current members subtracted (membership losses). The overall trend since 1990 has been one of declining gains. Since 1990, certificate and other losses have decreased more substantially than losses due to death. The total number of PCUSA members lost each year has been declining in the last 10 years, but the trend has not been sufficient to make up for the greater yearly decline in membership gains.

**Key Questions:**

- \* How would you describe the trend in total gains and total losses over the last 10 years in your presbytery? Do total gains exceed total losses? Or do total losses exceed total gains?
- \* What external factors (e.g., population loss in the presbytery) and internal factors (e.g., large loss of members by death related to the high age of members in PCUSA congregations) might explain these two trends over time?
- \* What steps can the presbytery take to increase the number of members and curb the number of losses (e.g., new church development)?

**Figure 6**  
**Number of Elders and Deacons by Gender**  
 2000 - 2009  
 Elizabeth Presbytery

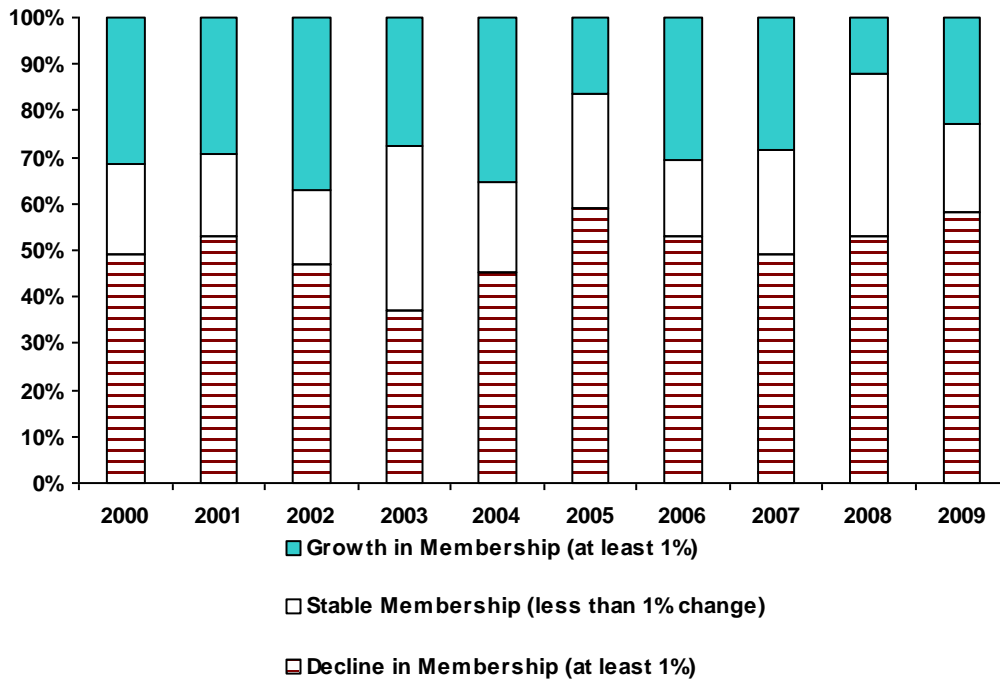


The graph above compares the number of elders and deacons in your presbytery who are female or male. The majority of members in the PCUSA (58%) are female. While the majority of PCUSA deacons are female (71%), the percent of PCUSA elders are nearly split among female and male (51% female; 49% male).

**Key Questions:**

- \* Has the number of persons serving as elders and deacons changed in the last 10 years?
- \* Are these trends indicators of other significant changes in the presbytery?
- \* What steps can the presbytery take to provide training, resources, and support for elders and deacons?
- \* What steps can the presbytery take to encourage male and female lay leadership in congregations?

**Figure 7**  
**Year-to-Year Church Membership Growth**  
 2000 - 2009  
 Elizabeth Presbytery



The graph above shows a year-to-year picture of church membership in three change categories: congregations that grew in membership from the prior year by 1% or more, stable congregations that grew less than 1% or lost less than 1% of their membership, and congregations that declined in membership from the prior year by 1% or more.

About one-quarter of all PCUSA congregations (25%) grew 1% or more between 2008 and 2009. Nearly one-half (45%) lost 1% or more of their membership in the past year. About three in ten congregations (29%) experienced no change in their membership.

**Key Questions:**

- \* How would you describe the majority of congregations in your presbytery -- growing, stable, or declining in membership?
- \* What are the significant factors in predicting membership growth or decline in the congregations in your presbytery?
- \* What steps can the presbytery take to assist congregations in their efforts to increase membership?